

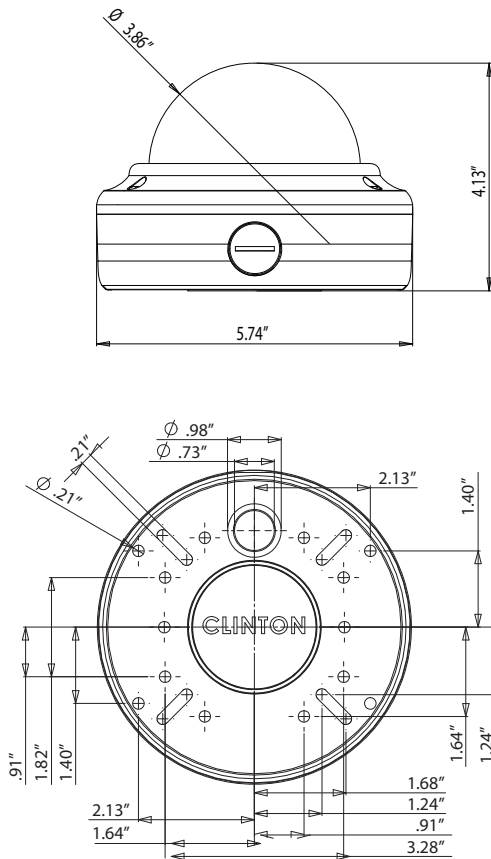


## CE-VX30

### Vandal X True Day/Night Dome Camera

- SONY 1/3" CCD (Super HAD)
- 600TVL Resolution
- 2.8 ~ 12mm (F1.2) Lens
- 33 Built-in IR LEDs
- Built-in Heater
- True Day/Night Cut Filter (Lens Type)
- NX3 Digital Signal Processor
- Smart-IR Function
- Digital Noise Reduction (DNR)
- Digital Wide Dynamic Range (D-WDR)
- Sense Up Feature for Optimal Night Image
- High Light Compensation (BLC)
- OSD Menu Control (Built-in Joystick or CE-REMOTE)
- 3-Axis Adjustment
- DC12V / AC24V
- UL Listed

### Dimensions



### Specifications

Camera	CE-VX30
<b>Image Sensor</b>	1/3 Inch SONY (Super HAD) CCD
<b>Resolution</b>	600 TV Lines
<b>IR LEDs</b>	33 pcs
<b>Effective Pixels</b>	768 (H) x 494 (V)
<b>Scanning System</b>	2:1 Interlace
<b>S/N Ratio</b>	52dB
<b>Sync System</b>	Internal
<b>Scanning Frequency</b>	15.734 KHz (H), 59.94 Hz (V)
<b>Minimum Illumination</b>	0.00001 Lux / F1.2 (Sens-Up x 258)
<b>Shutter Speed</b>	1/60 ~ 1/100,000 sec.
<b>Dynamic Range</b>	62dB (Max.)
<b>Lens</b>	2.8 ~ 12mm (F1.2) w/True D/N Filter
<b>Video Output</b>	1.0 Vp-p, 75Ω
<b>Power Consumption</b>	Max. 300mA (AC24V), Max. 810mA (DC12V)
<b>Power Requirement</b>	DC12V / AC24V
<b>Operating Temperature</b>	-20°F ~ 122°F
<b>Weather Rating</b>	IP 68
<b>Dimensions</b>	5.74" (Dia.) x 4.13" (H)
<b>Weight</b>	2.75 lbs.
<b>OSD Menu</b>	Control with OSD Joystick or CE-REMOTE
<b>Lens</b>	DC
<b>Exposure</b>	Shutter / AGC / Sens-Up / BLC / D-WDR
<b>Back Light</b>	Off / BLC / HSBLC
<b>White Balance</b>	ATW / AWB / AWC-SET / Manual
<b>Day / Night</b>	S-IR / Color / B&W / Auto
<b>3DNR</b>	Off / On
<b>Special</b>	Cam Title / D-Effect / Motion / Privacy / Defect
<b>Adjust</b>	Sharpness / Monitor

Information in this document is subject to change

### Recommended Power Supply

All Clinton Electronics Power Supplies

### Optional Accessories

- CE-VXWBB Wall Mount Bracket (in Black)
- CE-VXRFB Black Rubber Vandal X Dome Cover
- CE-VXRWB White Rubber Vandal X Dome Cover

### CE-REMOTE

- Plugs directly into Camera
- Adjusts OSD Functions
- Test Monitor Connection

