

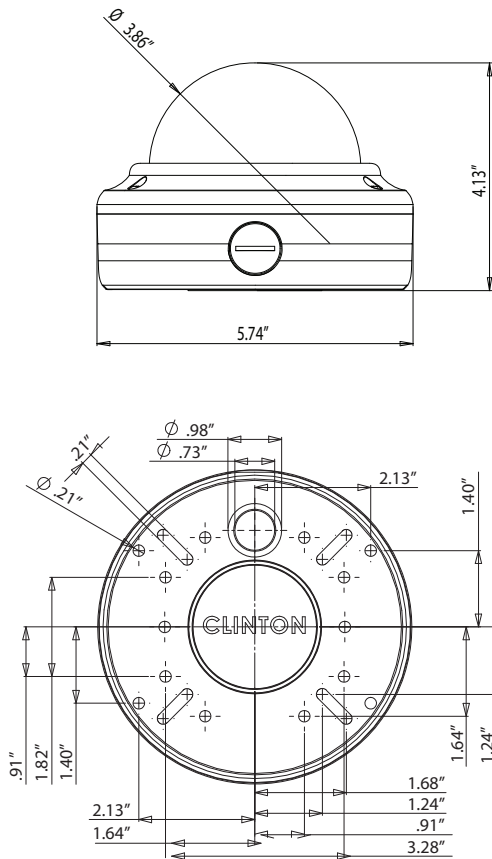


CE-VX60

Vandal X True Day/Night Dome Camera

- SONY 1/3" CCD (Super HAD)
- 580 TVL Resolution
- 6 ~ 50mm (F1.4) Lens w/True D/N Cut Filter
- S4 Digital Signal Processor
- Digital Noise Reduction (DNR)
- Sense Up Feature for Optimal Night Image
- Digital Image Stabilization (DIS)
- Back Light Compensation (BLC)
- High Light Compensation (HLC)
- OSD Menu Control (Built-in Joystick or CE-REMOTE)
- 3-Axis Adjustment
- DC12V / AC24V

Dimensions



Specifications

Camera	CE-VX60
Image Sensor	1/3 Inch SONY (Super HAD) CCD
Resolution	580 TV Lines
Effective Pixels	768 (H) x 494 (V)
Scanning System	2:1 Interlace
S/N Ratio	52dB (AGC Off, Weight ON)
Sync System	Internal / Line Lock
Scanning Frequency	15.734 KHz (H), 59.94 Hz (V)
Minimum Illumination	0.15 Lux / F1.2 (Color), 0.001 Lux w/Sense-Up at x256
Shutter Speed	1/60 ~ 1/100,000 sec.
Dynamic Range	62dB (Max.)
Lens	6 ~ 50mm (F1.4)
Video Output	1.0 Vp-p, 75Ω
Power Consumption	Max. 110mA (AC24V), Max. 220mA (DC12V)
Power Requirement	DC12V / AC24V
Operating Temperature	-20°F ~ 122°F
Weather Rating	IP 68
Dimensions	5.74" (Dia.) x 4.13" (H)
Weight	2.75 lbs.
OSD Menu	Control with OSD Joystick or CE-REMOTE
Lens	DC Video
Exposure	Shutter, AGC, Sens-Up
White Balance Control	ATW, Manual, AWC Set, Outdoor, Indoor
Back Light	OFF / BLC / HLC
Digital Noise Reduction	ON / OFF
Day/Night	Color / B&W / Auto / Extern
Image Adjustment	Freeze, V-Rev, H-Rev, D-Zoom, Sharpness
Special	Camera ID, Sync, Motion Detect, Privacy, DIS, Comm. Adj., Language, Reset

Information in this document is subject to change

Recommended Power Supply

All Clinton Electronics Power Supplies

Optional Accessories

- CE-VXWB Wall Mount Bracket
- CE-VXRB Black Rubber Vandal X Dome Cover
- CE-VXRW White Rubber Vandal X Dome Cover
- CE-REMOTE
 - Plugs directly into Camera
 - Adjusts OSD Functions
 - Test Monitor Connection

