

Script text guides you through the proper sequence of adjustments and tests. (Double click on the text to toggle the font size)

Automatically starts in QC inspection mode (no auto saves)

Select the model for QC inspection or alignment.

Status Bar shows serial number, date of micro code, timings, presets and restored registers, communication status and life of monitor.

Record monitor data to a file for possible use by Clinton Electronics Quality Control. (This is done automatically at the final step of the alignment procedure)

Saves monitor registers to a file for loading into another monitor or as a backup (before alignment) in case the alignment process does not produce the desired results.

Restores monitor registers settings from a previously saved file.

If the monitor is connected to a serial communication port (and powered on), then this software can auto-detect the proper port.

Clears out all of the User defined timings.

Factory adjusted size and centering unique for different timings. These registers are updated when performing a 'Service Save'.

User adjusted size and centering unique for different timings. These registers are updated when performing a 'User Save' or when the User changes the On Screen Controls.

Choose from specific adjustment categories so you only see what you need.

Prints the values of the currently displayed registers along with some additional information as generic text to the default printer.

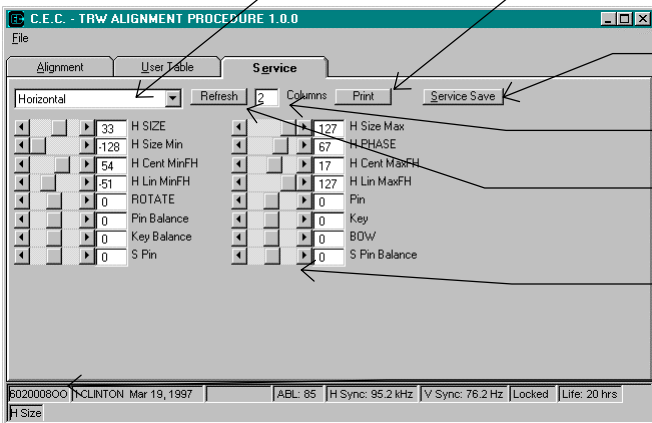
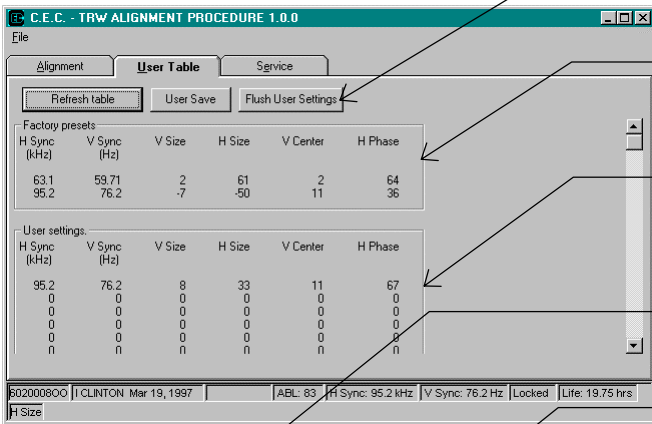
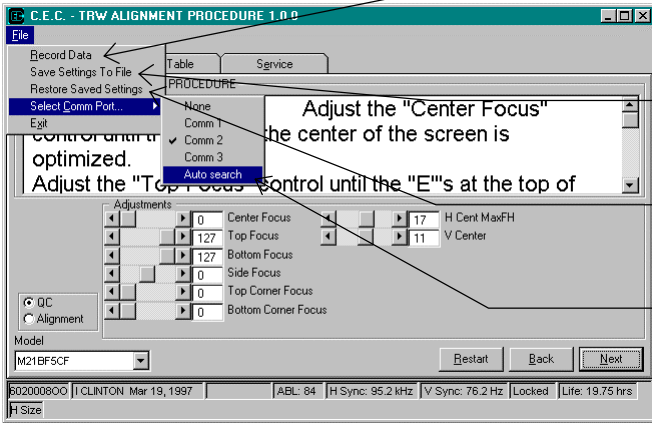
Saves all adjusted items to the non-volatile memory in the monitor.

Define the number of columns in which the slide controls are arranged.

Poll the current register values from the monitor.

Adjusts a control register in the monitor. You must do a Service Save to make the change permanent. Power cycling the monitor before doing a Service Save will cause all changes to be lost.

Double click the monitor's serial number to edit it.



**Keyboard controls:**

- 'TAB' moves to the next control.
- 'ALT'+ 'A' = Alignment page
- 'ALT'+ 'U' = User Table page
- 'ALT'+ 'E' = Service page

- 'ALT'+ 'F' = File menu
- 'SHIFT'+ '?' = poll registers
- 'UP / DOWN arrows' = navigate slider controls
- 'L / R arrows' = adjust selected slider by 1
- 'SHIFT'+ 'L / R arrows' = adjust by 8

- 'ALT'+ 'N' = Next step
- 'ALT'+ 'B' = Back step
- 'ALT'+ 'R' = Restart the script
- 'ALT'+ 'F', 'X' = Exit program