

CE-CM-LX-12

12ft Telescoping Ceiling Mount LCD/PVM Pole



Maximum Load Capacity: 60 lbs / 27.2 kgs

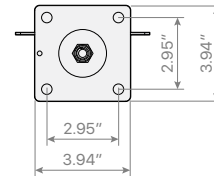


KEY FEATURES:

- Recommended to LCDs or PVMs up to 60 lbs
- Mounts to Steel Web Truss or Strut Channel with One Bolt
- Two-piece VESA mounting plate design for easy installation
- Adjustable from 6' 2.25" to 11' 9.75" from Ceiling
- Adjustable Tilt (0°-40°) and Pan (360°)
- Route Cables Inside the Pole for a Clean Appearance
- Includes Safety Cable (15ft)
- Leveling Plate for Uneven Ceilings
- VESA 75 & 100 (M4)
- UL Listed

CE-CM-LX-12 (White) / CE-CM-LX-12-B (Black)	
VESA Hole Patterns	75x75, 100x100 (M4)
Pole Dimensions	Adjustable from 6' 2.25" to 11' 9.75"
Pole Weight	9.45 lbs / 4.286 kgs
Materials	Steel Pole / Steel Mounting Plate & VESA Plate
Max LCD/PVM Weight	60 lbs / 27.2 kgs

DIMENSIONS:



Unit : Inches

