

CE-VXRMB Install Guide

Included Items:

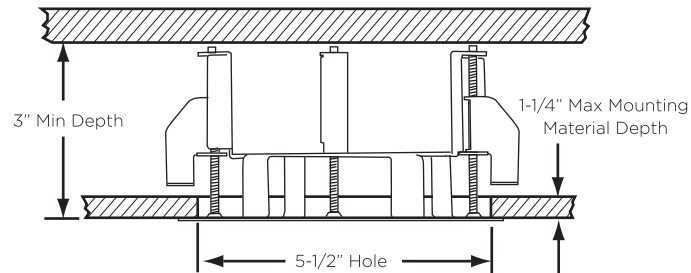
- Vandal X Recess Mount x 1
- Instructions x 1

Required Items:

- Vandal X Series Dome Camera
- Phillips Head Screwdriver
- T20 Security Torx Wrench
- Drill
- 5-1/2" Hole Saw

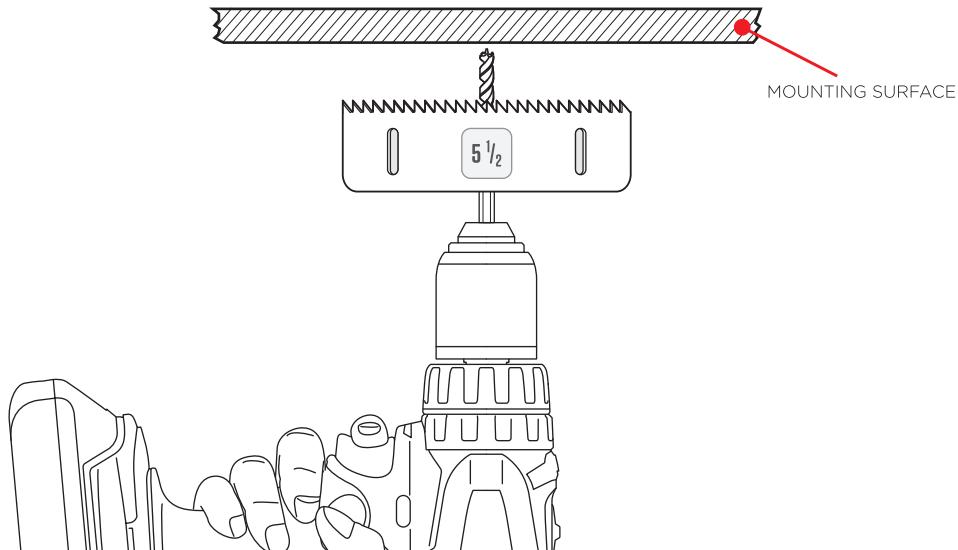
PREPARING MOUNTING SURFACE

The Vandal X Recess Mount requires a minimum 3" depth and can be installed into mounting surfaces up to 1-1/4" thick. Verify that the intended mounting surface meets these requirements before proceeding with the installation.



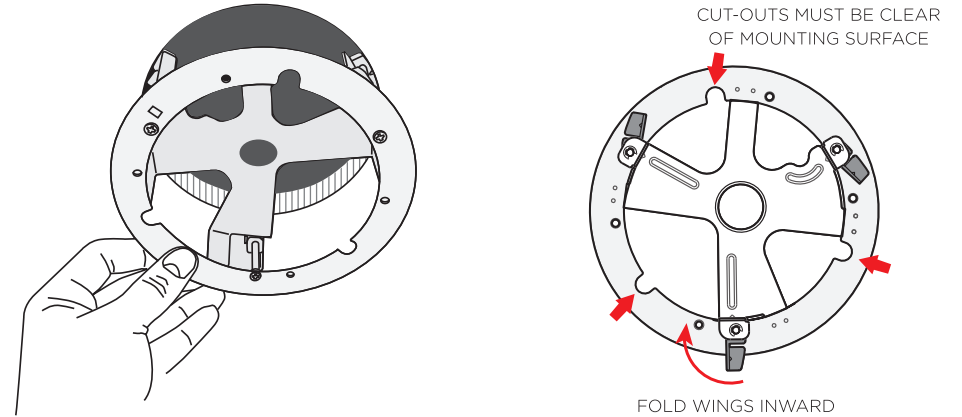
1. CUT 5-1/2" HOLE

Cut a hole into the mounting surface with a 5-1/2" hole saw.



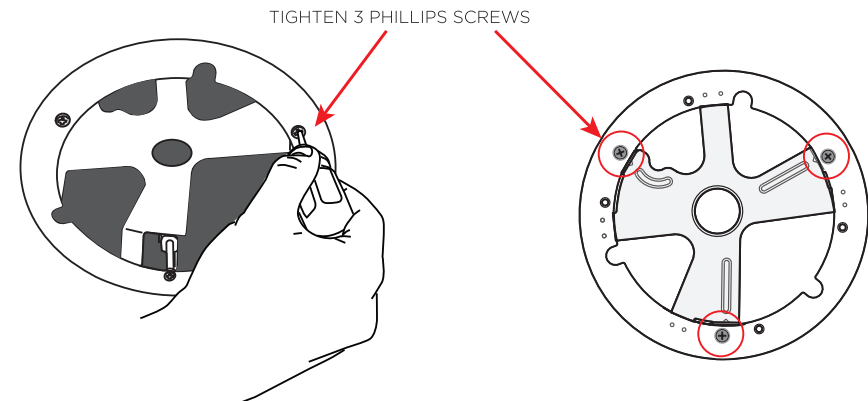
2. INSTALLING RECESS MOUNT

a. Fold the 3 wings inward, then insert the Recess Mount into the 5-1/2" hole.



NOTE: When mounting make sure the mounting surface does not block the 3 perimeter cut-outs shown above. These cut-outs must be clear in order to accept the Vandal X case in the next steps.

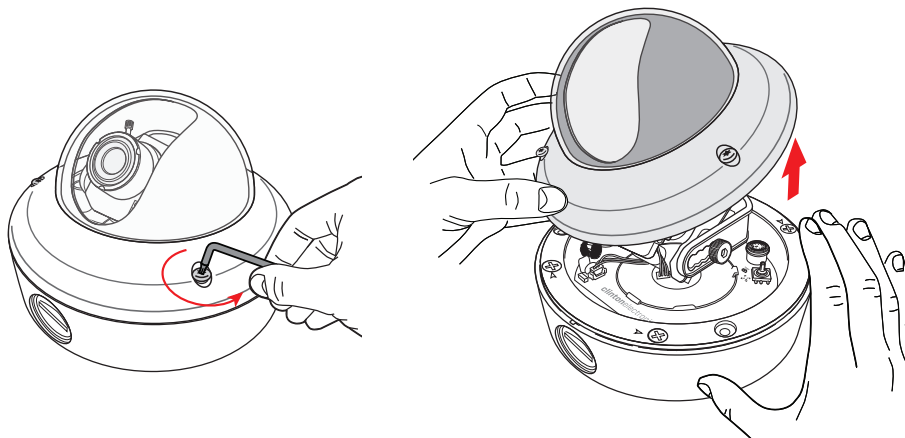
b. With a Phillips head screwdriver, rotate the three screws clockwise to flip the tension wings out until they firmly grip the mounting material



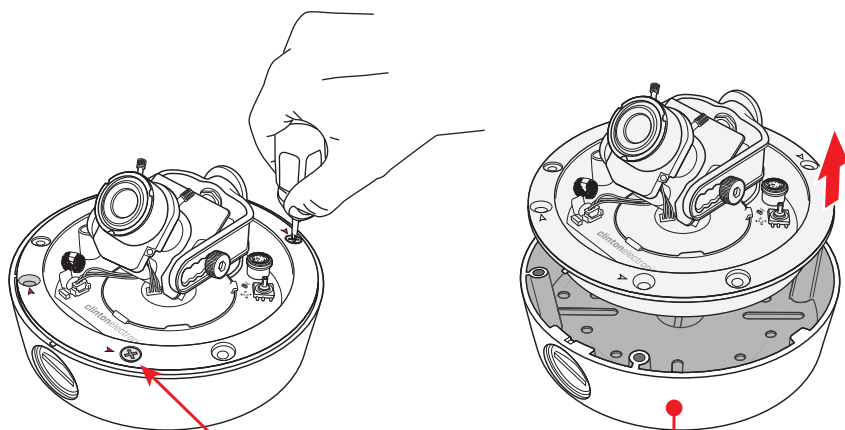
NOTE: If installing into drywall or ceiling tile; over-tightening the wings can damage the mounting surface, possibly leading to the camera falling, causing damage or injury.

3. DISASSEMBLE VANDAL X CAMERA

a. Use the Torx wrench that was included with the Vandal X camera to loosen the 3 Torx screws that hold the dome assembly onto the base. Remove the top dome cover from the camera base.



b. Remove the four Phillips head screws that hold the inner case onto the camera base, then remove the inner camera assembly from the camera base. Set this base aside. You will not need this base when using the Recess Mount.

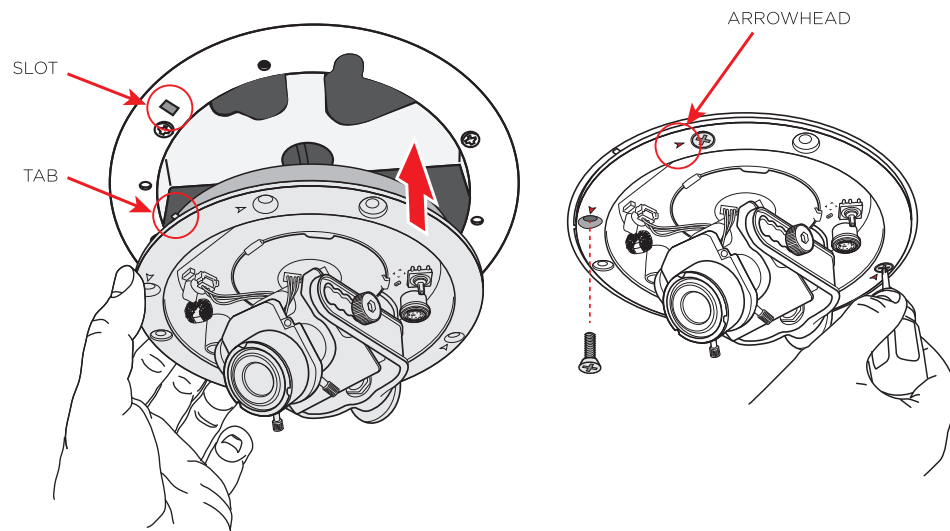


REMOVE 4 PHILLIPS SCREWS
MARKED WITH ARROWHEADS

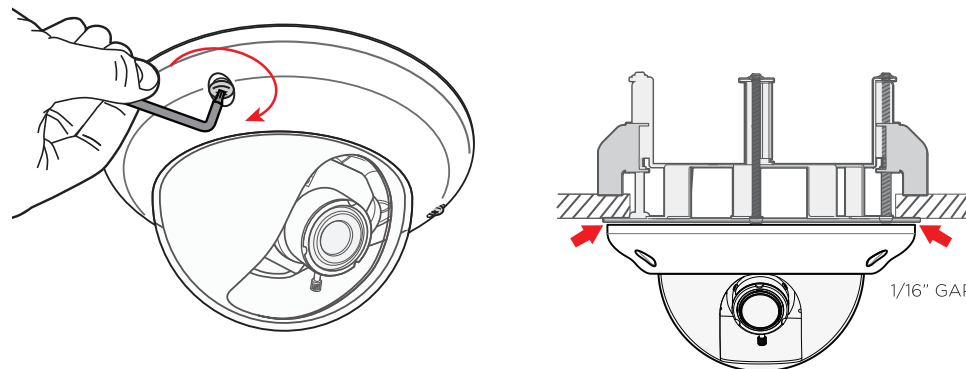
BASE NO LONGER USED

4. MOUNTING THE CAMERA

a. Feed the power and video cables through the center hole. Align the tab on the camera with the slot in the Recess Mount when reassembling. Replace the 4 screws that hold the camera assembly to the Recess Mount. The 4 holes are marked with arrowheads.



b. Replace the dome cover onto the camera assembly and tighten the 3 Torx screws to complete the installation. Make sure each screw is tight to ensure superior weather resistance.



**IF TORX SCREWS AREN'T FULLY TIGHTENED THE
WEATHER RESISTANT SEAL WILL BE COMPROMISED,
ALLOWING WATER TO LEAK INTO THE CAMERA.**

NOTE: Due to the replacement of the bottom case, a 1/16" gap between the Recess Mount and the Vandal X camera will result. This will not affect the IP68 weather rating of the Vandal X series camera.