

VX Series Install Guide

For Analog Vandal X Cameras : CE-VX15(B) • CE-VX20(B) • CE-VX40(B) • CE-VX45(B) • CE-VX60(B) • CE-VX70(B)

Included Items:

- Vandal X Series Dome Camera x 1
- Torx Wrench (T20 Security) x 1
- Mounting Screws x 4
- Drywall Anchors x 4
- Focusing Tool x 1 (*VX60 models only*)

Required Items:

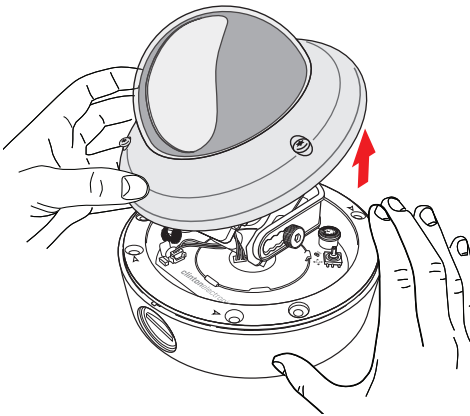
- Phillips Head Screwdriver or Drill with Phillips Head Bit
- Power Supply

Optional Items:

- CE-REMOTE (OSD Remote Control)

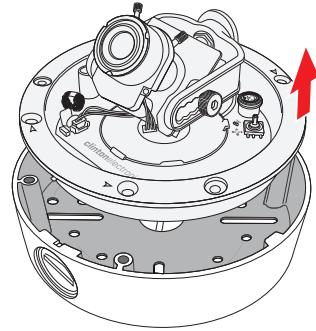
1a. DISASSEMBLE

Use the supplied Torx wrench to loosen the 3 Torx screws that hold the dome assembly onto the base. Remove the top dome cover from the camera base.



1b. DISASSEMBLE

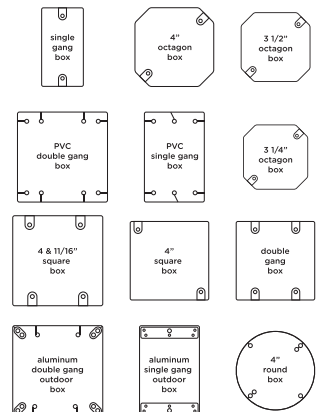
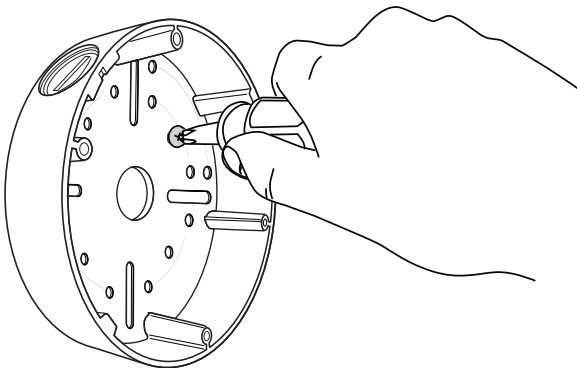
Remove the four Phillips head screws that hold the inner case onto the camera base, then remove the inner camera assembly from the camera base. Keep these 4 screws for final assembly.



2. MOUNT OUTER CASE

If mounting to solid surface, use the four Phillips head mounting screws & drywall anchors if necessary.

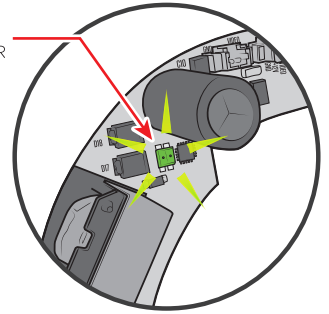
If mounting to a conduit box, choose the mounting hole pattern that best suits your application and use the appropriate screws. Multiple mounting hole patterns are provided.



3. ATTACH CABLES

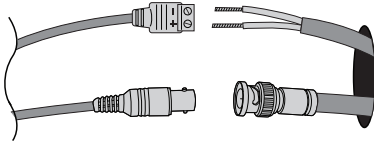
Make connections to the BNC cable and the power connection. Feed any cable slack into the mounting surface. A Power LED (on the circuit board) will illuminate GREEN when the camera is receiving correct power. To ensure quality operation, verify proper BNC and power termination, along with proper voltage at camera.

POWER INDICATOR



POWER CONNECTION

TO CAMERA



TO DVR OR MONITOR

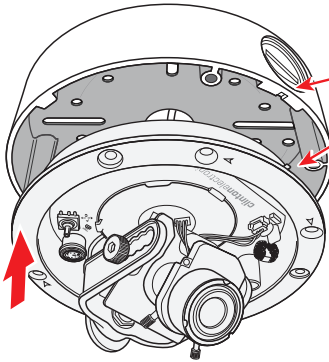
ANALOG BNC CONNECTION

RVM - Rated Voltage Monitoring

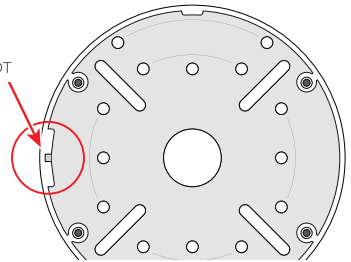
LED COLOR	STATUS
GREEN	Safe Power
RED - SOLID	Over 29 Volts (AC24V)
RED - BLINK	Under 10 Volts (DC12V)

4a. ATTACH CAMERA

Replace the inner camera assembly into the mounting base as shown below. Align the key on the lip of the inner camera assembly with the slot on the camera base when reassembling. If these are not aligned properly the weather resistant seal will be compromised, allowing water to leak into the camera.



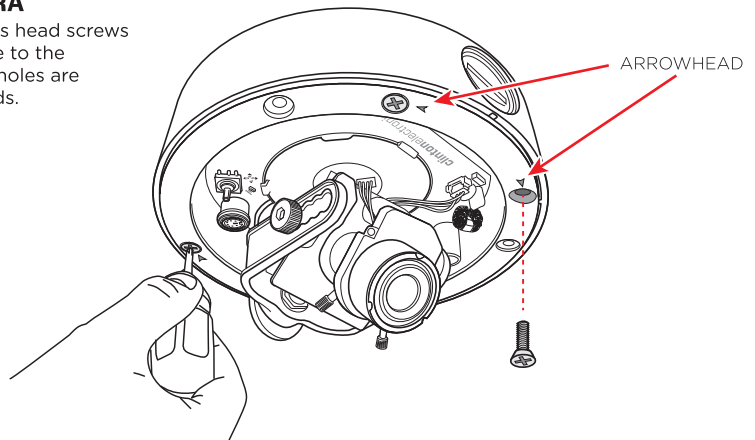
ALIGN KEY & SLOT



IF THE KEY & SLOT ARE NOT ALIGNED PROPERLY, THE WEATHER RESISTANT SEAL WILL BE COMPROMISED, ALLOWING WATER TO LEAK INTO THE CAMERA.

4b. ATTACH CAMERA

Replace the four Phillips head screws that hold the inner case to the camera base. The four holes are marked with arrowheads.



ARROWHEAD

5. CAMERA ANGLE ADJUSTMENT

Adjust the angle of the camera as necessary.

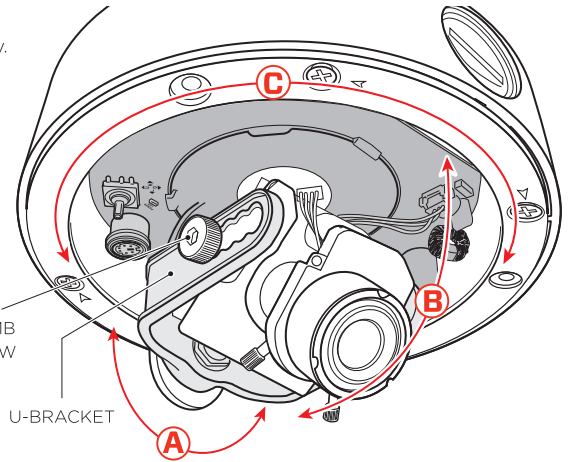
A. Lens Rotation: Rotate the U-Bracket on the gimbal to adjust.

B. Lens Angle: Loosen thumb screws on each side to adjust the tilt of the lens.

C. Camera Plate Rotation: Pinch the gimbal U-Bracket and rotate the camera assembly on the base.

THUMB SCREW

U-BRACKET



6a. ZOOM/FOCUS ADJUSTMENT

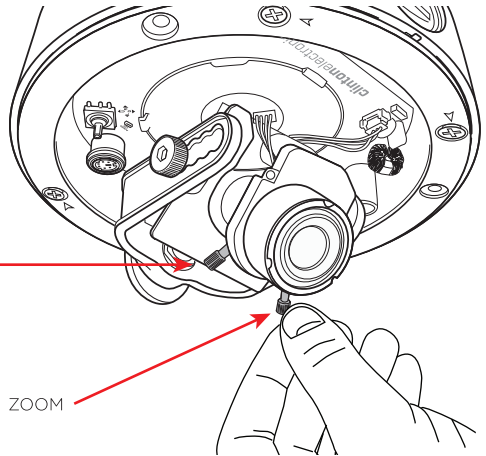
Loosen the appropriate adjustment lever by turning counter-clockwise.

To widen or narrow the viewing angle rotate the ZOOM lever to the Left or Right.

Rotate the Focus lever Left or Right to focus the lens.

FOCUS

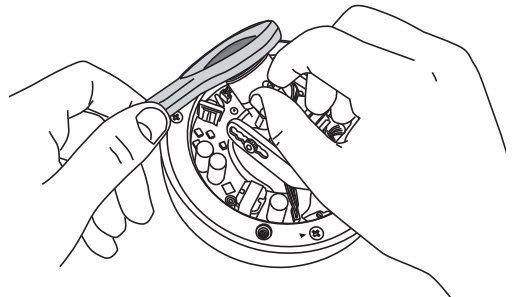
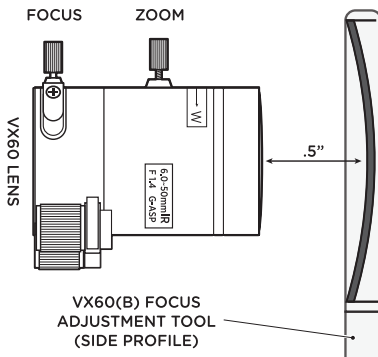
ZOOM



After adjustments have been made make sure to tighten the adjustment levers to lock the adjustments into place.

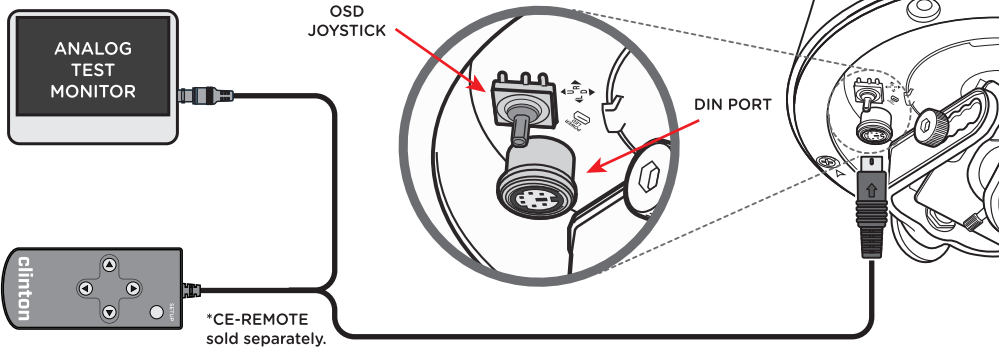
6b. VX60(B) Lens Focusing Tool

With a test monitor attached, place the supplied focus adjustment tool approximately 1/2" in front of the lens (concave side in), to simulate the dome being attached. Adjust the lens as needed to achieve proper focus.



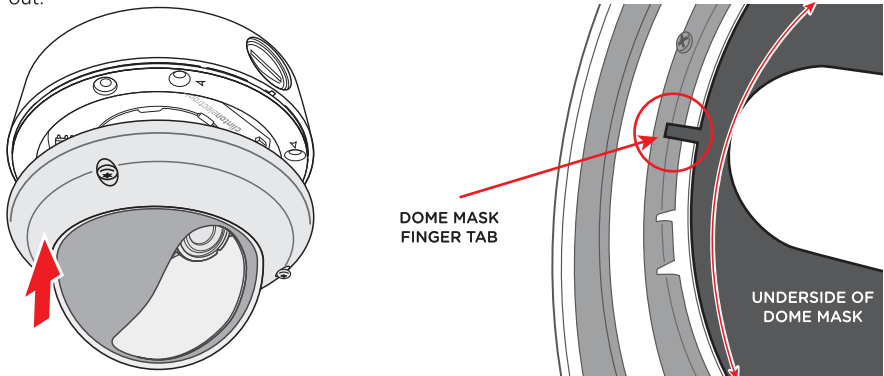
7. TEST MONITOR / OSD CONTROL

Before replacing the dome assembly you may wish to test the camera with a test monitor. To test, plug in the CE-REMOTE into the DIN Port, and connect your test monitor to the BNC connection located on the CE-REMOTE cable. OSD Adjustment can be made by using the OSD Joystick or the optional CE-REMOTE.



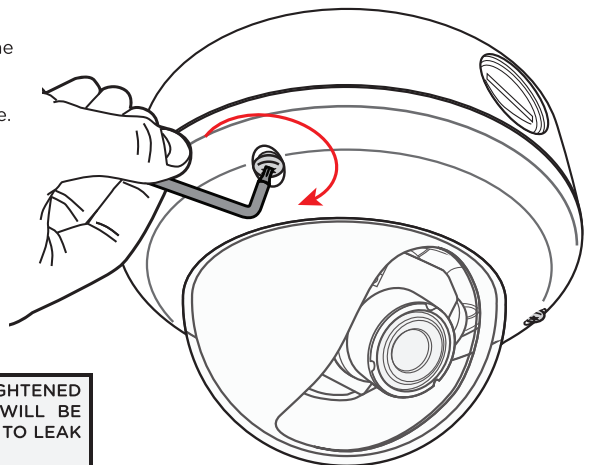
8a. REASSEMBLE

Carefully install the dome cover onto the camera base. If the cut-out in the dome mask does not align with the lens of the camera, rotate the dome mask using the finger tab located directly under the cut-out.



8b. REASSEMBLE

Using the supplied Torx wrench, tighten the 3 Torx screws that hold the dome cover onto the base. Make sure each screw is tight to ensure superior weather resistance.



IF TORX SCREWS AREN'T FULLY TIGHTENED THE WEATHER RESISTANT SEAL WILL BE COMPROMISED, ALLOWING WATER TO LEAK INTO THE CAMERA.