

CE-WC1HD Install Guide

Included Items:

- Wall Camera x 1
- Mounting Template x 1
- Allen Wrench x 1
- Conduit Box Screws x 2
- Drywall Screws x 4
- Drywall Anchors x 4
- 12V Power Pigtail x 1
- Test Monitor Lead x 1

Required Items:

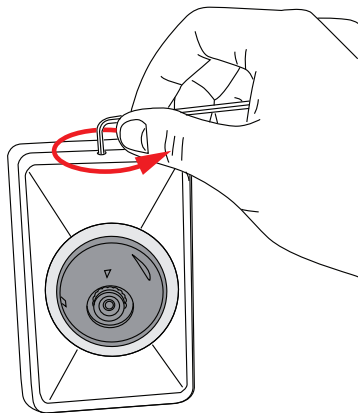
- Phillips Head Screwdriver
- 12 Volt DC Power Supply

Optional Items:

- Power Drill
- Drill Bit (5/8" Minimum)

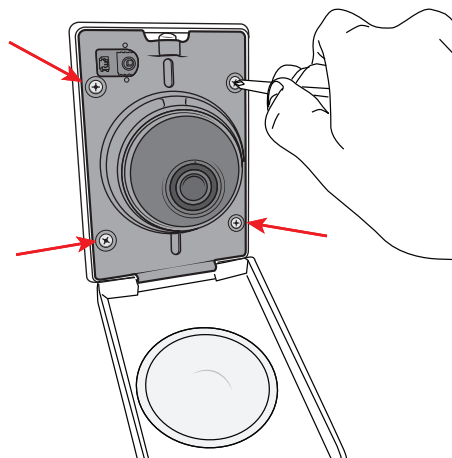
1. DISASSEMBLE

a. With the supplied Allen Wrench, loosen the top screw to open the hinged cover plate.



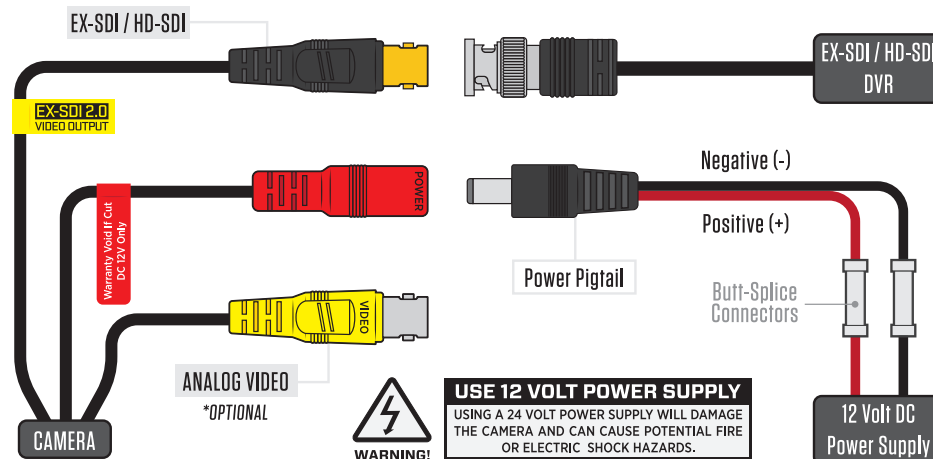
*The screw will not come all the way out, it will remain in the camera plate.

b. Then remove the 4 Phillips head screws that hold the black camera plate to the white base.



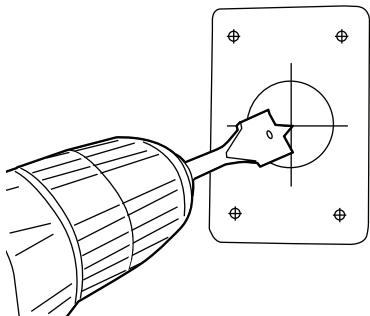
3. CONNECT CABLES

Make connections to the power and BNC cable (BLACK connector is for EX-SDI, YELLOW connector is for Analog video). Use 12 Volt DC only for camera power! If using 18/2 wire for the power wire: use the supplied 12V Power Pigtail and attach to wire with appropriate wire connectors, such as butt-splice connectors (not included).



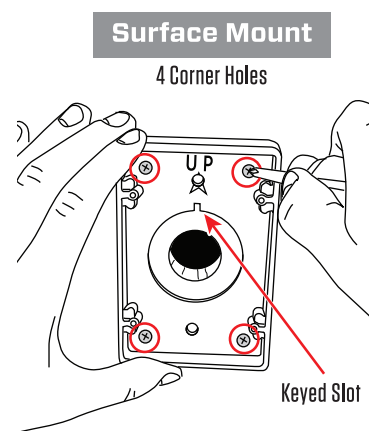
2. SURFACE MOUNT PREPARATION *If Mounting To A Conduit Box, Skip To Step 3.

a. Affix template to surface and drill hole in the center. This hole must be large enough to pass the power and video cables through (5/8" minimum). The four corner marks will be used in step 4.

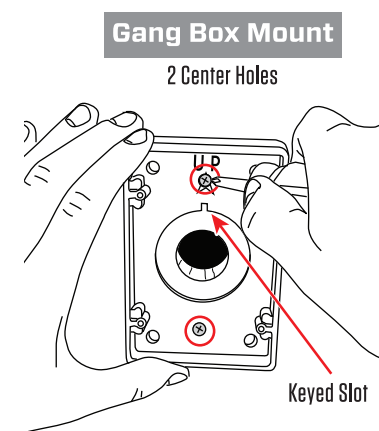


4. ATTACH MOUNTING PLATE

Make sure the keyed slot and orientation arrow are pointing up. Attach the baseplate to the surface by tightening drywall screws* into the 4 corner holes or to gang box by tightening screws into the 2 center holes.

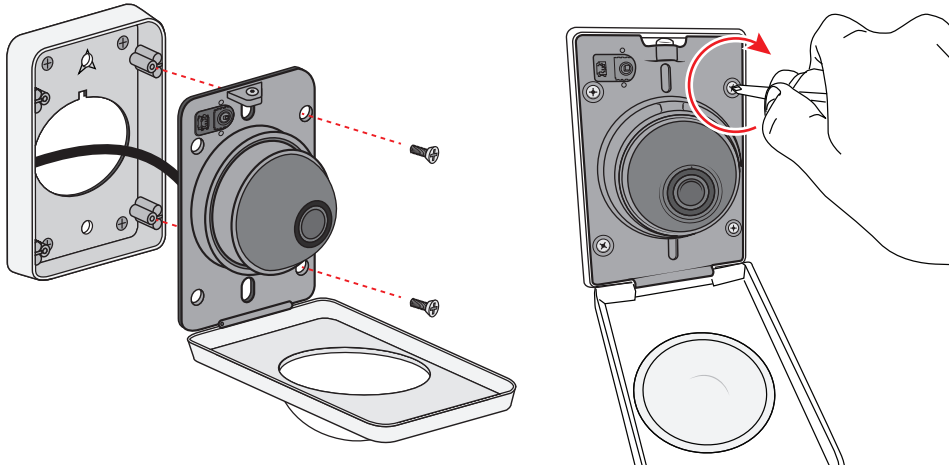


*Use supplied drywall anchors if needed.



5. ATTACH CAMERA TO MOUNTING PLATE

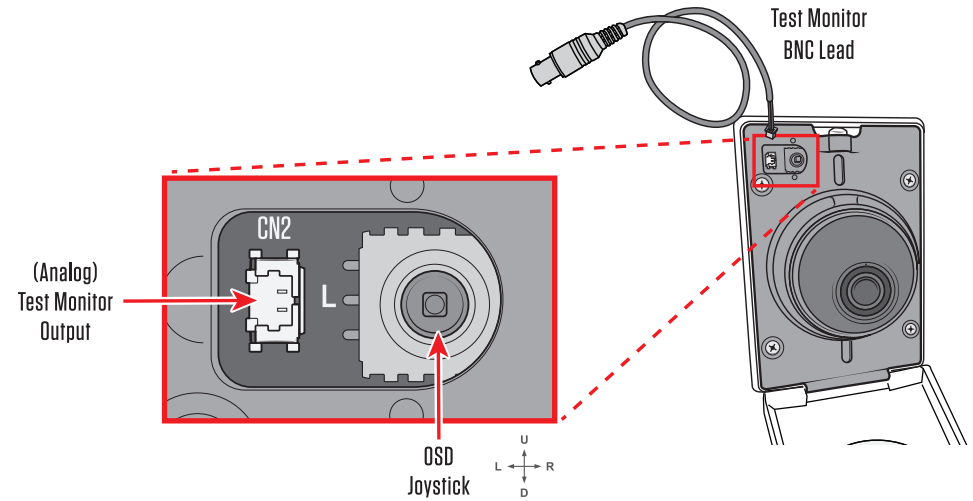
Attach the camera onto the white mounting base plate using the 4 Phillips head screws that were removed in the first step.



7. CAMERA IMAGE ADJUSTMENT

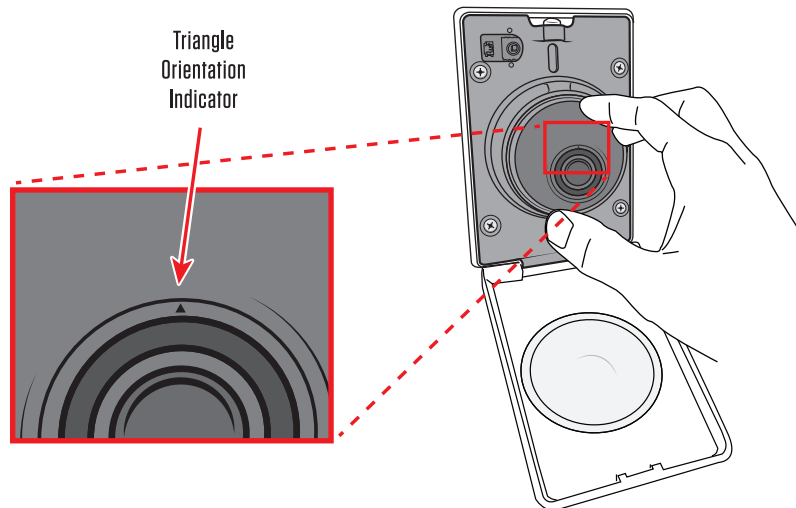
To test the camera with a test monitor, plug the supplied Test Monitor BNC Lead into the small, 2 PIN connector (marked CN2) next to OSD Joystick. This connection only outputs ANALOG video. OSD Adjustment can be made by using the OSD Joystick

**Refer to OSD Manual for detailed instructions on adjusting camera settings.*



6. ADJUST CAMERA ANGLE

Gently push inward on the camera ball to adjust. Note that the triangle orientation indicator on the rim of the lens should be pointed UP when adjustment is complete.



8. REPLACE DOME COVER

Close the hinged cover and secure by tightening the internal set screw on top of the camera using the supplied Allen wrench.

