

CE-M4 Install Guide

Included Items:

- Mounting Pole
- Mounting Hardware
- VESA Mounting Bracket
- Tube Crush Support
- Rivets
- Instructions

Required Items:

- 3/16" Allen Wrench
- 5/16" Nut Driver
- 7/16" Wrench
- 10mm Wrench
- Phillips Head Screwdriver
- Hammer
- Power Drill with #11 Drill Bit

⚠ Maximum Load Capacity: 8 lbs / 3.6 kgs ⚠



CAUTION!

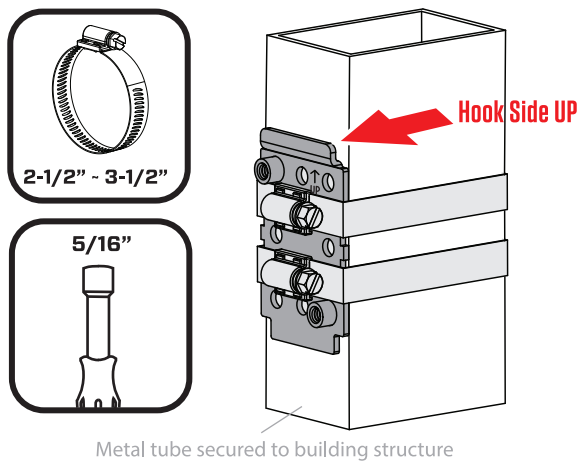
USE ONLY AS DESIGNED

THIS MOUNT IS DESIGNED TO ATTACH A MONITOR OR PVM TO A FREESTANDING STEEL SHELF UPRIGHT, METAL PIPE OR TUBE, OR STRUT CHANNEL STRUCTURE. IT IS NOT DESIGNED TO MOUNT TO A WOODEN SURFACE. IT IS INTENDED FOR USE ONLY WITH THE MAXIMUM WEIGHT INDICATED. USE WITH PRODUCTS HEAVIER THAN THE MAXIMUM WEIGHTS INDICATED MAY RESULT IN INSTABILITY CAUSING POSSIBLE INJURY.

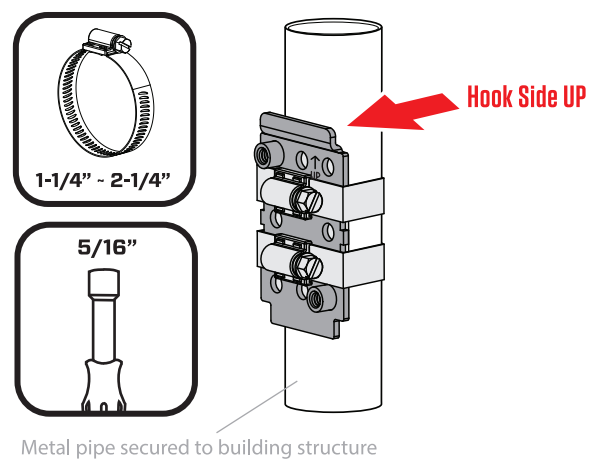
1. ATTACH MOUNTING PLATE

The M4 bracket is designed to mount to either vertical square tubing or 1-1/2" diameter round pipe. The hook side of the plate should face upward to aid in installation. Use a 5/16" nut driver to open the hose clamp completely. Use the 2-1/2"-3-1/2" clamp for square tubing up to 2" x 3". Use the 1-1/4"-2-1/4" clamp for 1-1/2" round pipe. Wrap the clamp around the desired support member, and re-tighten the hose clamp until firmly secured.

SQUARE TUBE OPTION

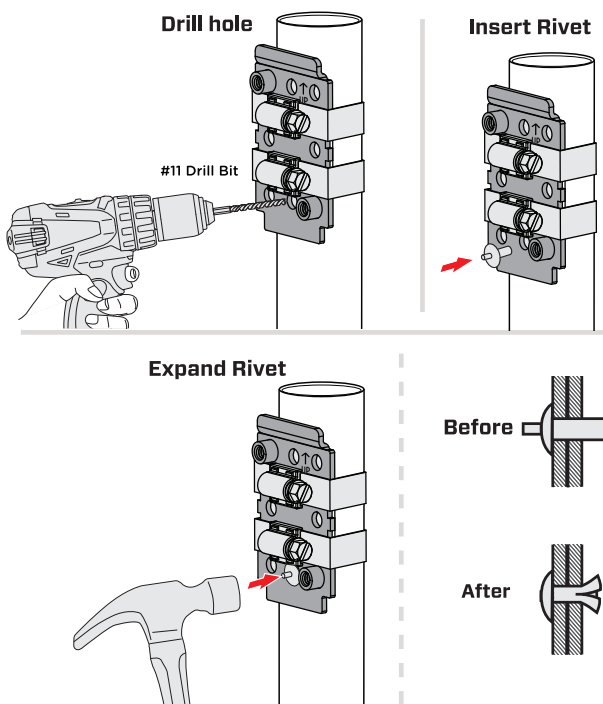


ROUND PIPE OPTION



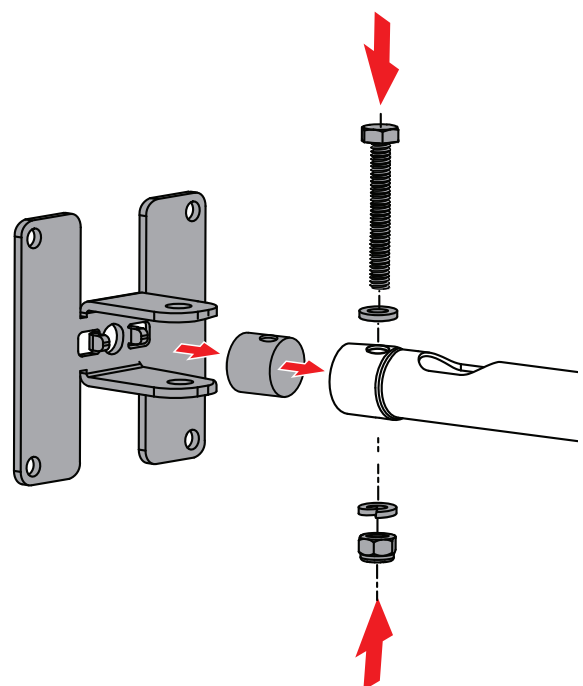
2. SECURE WITH RIVET

After the mounting plate is placed at its desired position, drill a hole through the pole or pipe using a #11 drill bit in a power drill. Insert the rivet until the backside of the head is flush with the outer surface of the mounting plate. Sharply strike the pin with a hammer to expand the rivet.



3. ATTACH VESA BRACKET & CRUSH SUPPORT TO POLE

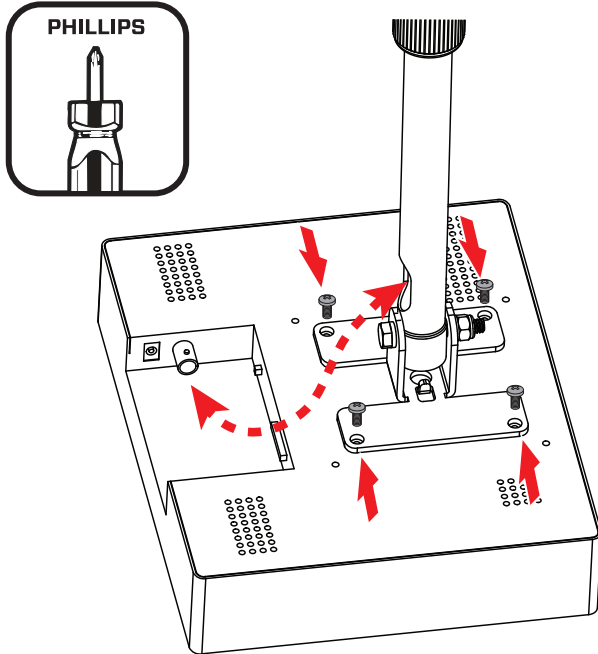
Slide the Crush Support piece into the end of the pole. Attach the VESA bracket to the end of the pole using the included 1/4"-20 x 1-1/2" bolt, 1/4" washer, lock washer, and locknut. Tighten with 10mm & 7/16" wrenches.



4. ATTACH MONITOR

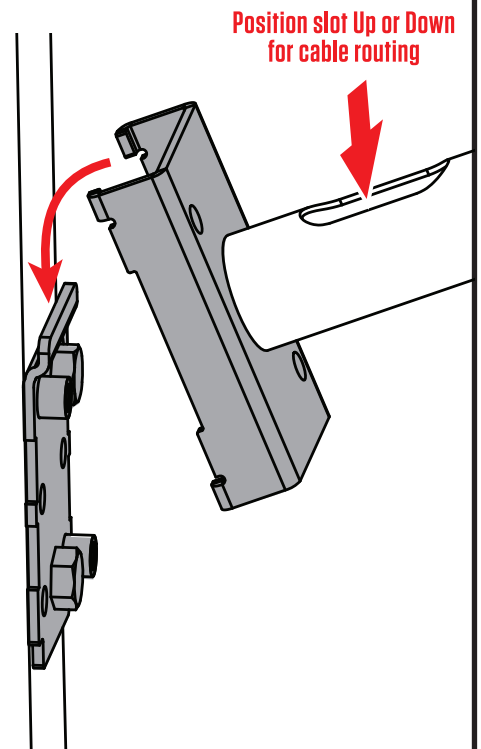
Set the monitor/PVM face down on a clean, flat surface. Align the VESA 75 pattern to the mounting pattern on the monitor/PVM. Attach the mount to the monitor/PVM by tightening the included four M4 screws with a Phillips head screwdriver.

NOTE: Position the pole's slot in the desired direction for best cable routing.



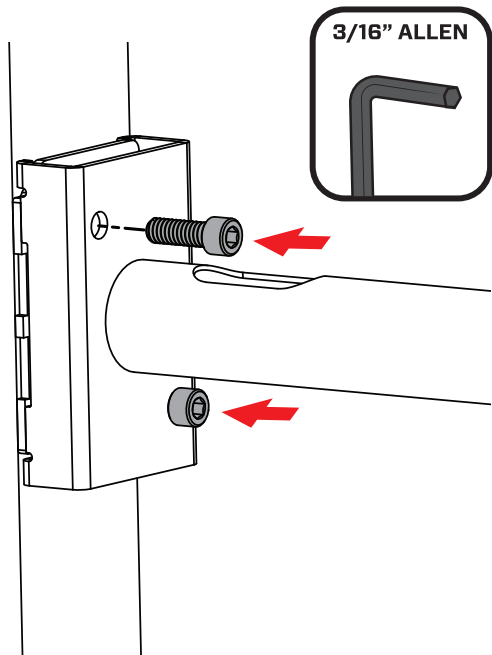
5. ATTACH TO MOUNTING PLATE

Position the cable routing slot in the desired orientation for cable routing in the final step. Slide the bent tabs of the pole's base onto the support hook on the mounting plate.



6. SECURE BASE

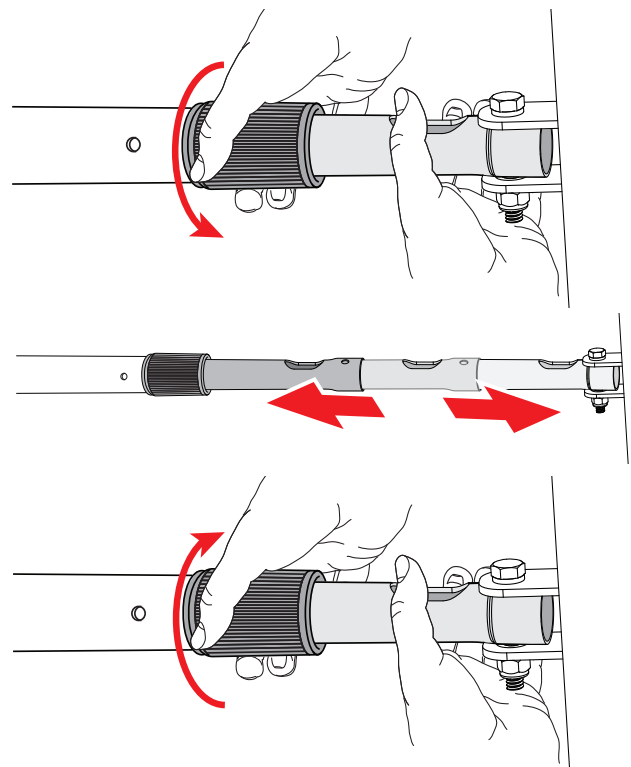
Secure the base to the mounting plate by tightening the included 1/4"-20 socket cap screws with a 3/16" Allen wrench.



7. ADJUST POLE LENGTH

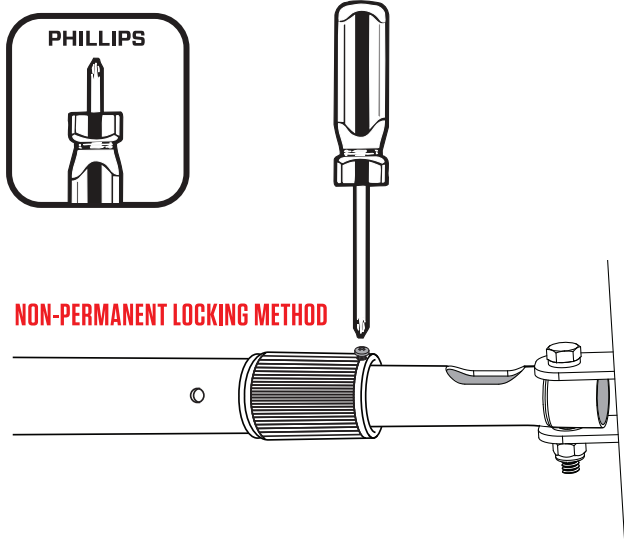
Loosen the twist-lock collar by turning it counter-clockwise. Extend the pole by gently pulling it out to the desired length.

Once the length of the pole has been adjusted, lock the pole in position by rotating the twist-lock collar clockwise as snug as possible.



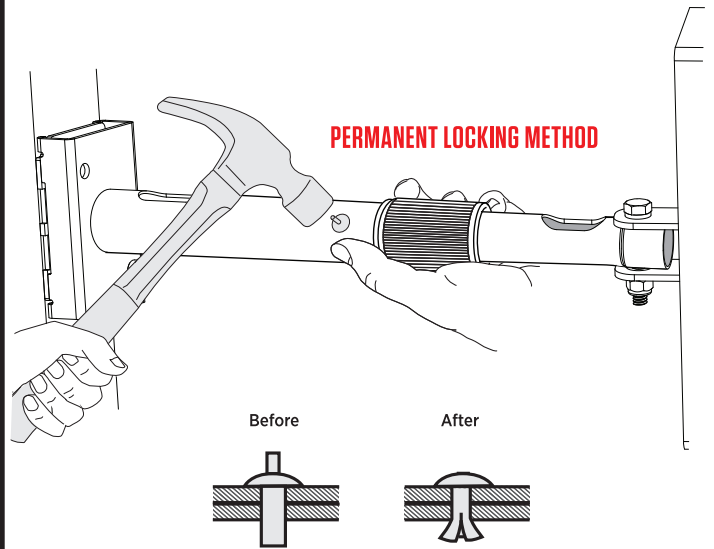
8a. INSTALL LOCKING SCREW

After the inner pole is adjusted to the desired length and rotation, you can choose a non-permanent method of secondary pole locking, by installing the M4 Phillips screw into the twist lock collar. Tighten screw firmly with Phillips head screwdriver until secure.



8b. INSTALL RIVET

After the inner pole is adjusted to the desired length and rotation, drill a #11 hole into the inner pole, using the pilot hole located adjacent to the locking collar for positioning. Place the rivet through hole and strike the pin sharply with a hammer. Once this rivet is in place, the length and rotation of the pole can no longer be adjusted.



9. ROUTE CABLES

Feed the desired power and video cables through the slot near the base of the pole and out through the slot at the monitor/PVM end of the pole.

