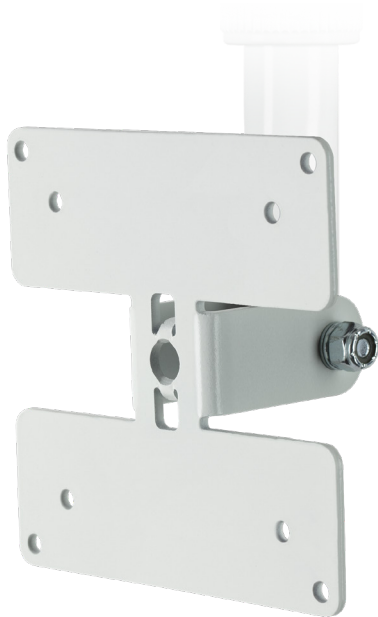


CE-VCAM

VESA Mounting Bracket for Telescoping Camera Poles



Maximum Load Capacity: 10 lbs / 4.53 kgs



KEY FEATURES:

- Easily install a LCD or PVM from a Telescoping Camera Pole*
- Recommended for LCD or PVM up to 10 lbs
- VESA 75 & 100
- Adjustable Tilt
- Includes Mounting Hardware & 20' Safety Cable

**Telescoping Camera Pole Sold Separately*

GENERAL	
Mounting Plate	VESA 75 (75mm x 75mm)
Dimensions (W x H x D) w/ VESA Plates Attached	4.37" x 4.37" x 2.2" 111mm x 111mm x 55.88mm
Weight	0.5 lbs / 0.22 kg
CAMERA POLE COMPATIBILITY	
CE-CP3W	Adjustable from 1' 3" to 2' 7" - White
CE-CP3B	Adjustable from 1' 3" to 2' 7" - Black
CE-CP6W	Adjustable from 3' to 5' 9" - White
CE-CP6B	Adjustable from 3' to 5' 9" - Black
CE-CP12W	Adjustable from 6' 2" to 11' 9" - White
CE-CP12B	Adjustable from 6' 2" to 11' 9" - Black
CE-CP17W	Adjustable from 6' 2" to 17' - White
CE-CP17B	Adjustable from 6' 2" to 17' - Black

DIMENSIONS:

