

# WHITE LED/MOTION User Guide

for models: CE-VX2QHD-WL

*\*Default Motion LED setting is: ON + 10 Sec*

## Accessing Motion LED Settings

Access the camera's OSD menu by using the built-in joystick, CE-REMOTE, or UCC function. With the OSD menu open, enter the SPECIAL menu, then enter the MOTION sub-menu. From the Motion sub-menu enter the MOTION DET settings or set the mode to CONSTANT (White LEDs are constantly On when ambient light is low), or set to OFF (White LEDs do not turn On).

### Main Menu / Special / Motion / LED Mode

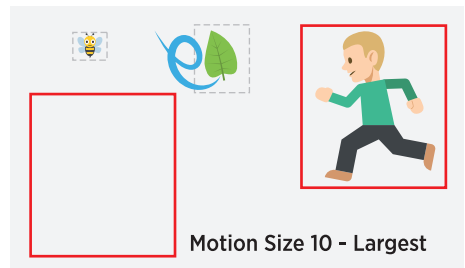
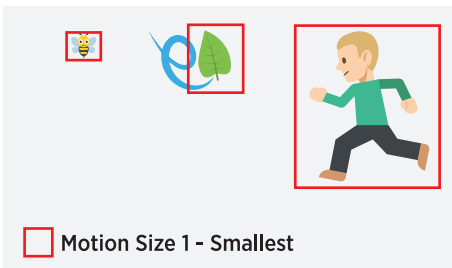
MOTION	
LED MODE	MOTION DET ↓
DET WINDOW	↕
SENSITIVITY	0 LO       HI
MOTION OSD	OFF
TEXT ALARM	OFF
RETURN	↕

LED MODE	
LED ON TIME	10
MOTION SIZE	5
LED BRIGHT	5
FLASH	MIDDLE
FLASH TIME	3
RETURN	↕

## Motion LED Settings

**LED ON Time:** Adjust the length of time the White LEDs stay ON when triggered. (1 - 20 sec)

**Motion Size:** When set to a smaller number, the area of motion needed to trigger motion detection is small. A larger number for motion size will require a greater area of motion to trigger motion detection—smaller motion areas will be ignored.



*Any moving object larger than the set Motion size will trigger Motion Detection. If Motion Detection is not triggering, try adjusting the Motion Size smaller.*

To make the camera **LEAST** sensitive to motion: **SENSITIVITY 0 (LO) + MOTION SIZE 10 (LARGE)**  
— object will need to be very close to camera or extreme change in scene/lighting to trigger LEDs

To make the camera **MOST** sensitive to motion: **SENSITIVITY 10 (HI) + MOTION SIZE 1 (SMALL)**  
— LEDs will trigger frequently from any movement, including: rain, leaves, insects, car headlights, etc.

**If you need further help call Clinton Electronics Technical Support at 800-549-6393.**

*\*Information in this document is subject to change without notice*

## Motion LED Settings Continued...

**LED BRIGHT:** Adjust the brightness of the White LEDs. The higher the number, the brighter the LEDs.

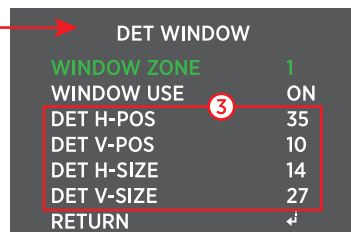
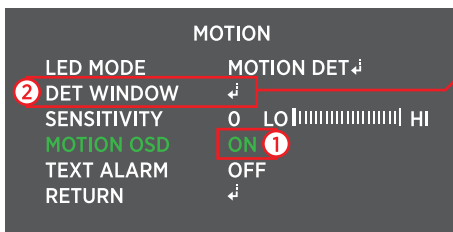
**FLASH:** If desired the White LEDs can flash On/Off when triggered. Set to Low, Middle, or High flash rate. Set to OFF to disable the flashing LEDs.

**FLASH TIME:** Adjust the amount of time the White LEDs flash when enabled. These adjustments will have no affect if Flash is set to OFF. (1 ~ 20 sec)

## Creating Motion Detection Zones

Motion Detection zones can be created to mask out areas of un-wanted motion, reducing the amount of false-motion detection/White LED triggers. To create a Zone:

1. Set MOTION OSD to On. (this displays the area of the Detection Window)
2. Select DET WINDOW from the Special menu screen.
3. Select your Window Zone and adjust the size/position as desired.



Default - Motion Detection Full Scene



Modified - Only Motion Detected in this Zone

Depending on the Motion Size set, it might not be possible to scale down the Window Zone. Ex: if Motion Size is set to 10, the Window Zone H-Size/V-Size will not go smaller than 35 — whereas when Motion Size is set to 1 the H-Size/V-Size can be scaled down to a value of 5.

## Turn OFF White LEDs

To disable the White LEDs set the LED MODE in the Motion menu to OFF.

If you need further help call Clinton Electronics Technical Support at 800-549-6393.

*\*Information in this document is subject to change without notice*

v.07.09.20