

CE-TC1QHD Install Guide

Included Items:

- Teller Camera Assembly x 1
- Power Pigtail x 1
- Phillips-head screws x 4
- Instructions x 1

Required Items:

- DC12V Power Supply
- Two Phillips Head Screwdrivers
- Power Drill with Phillips Head Bit

Optional Items:

- Test Monitor
- 1/8" Drill Bit
- 3/4" Spade Drill Bit



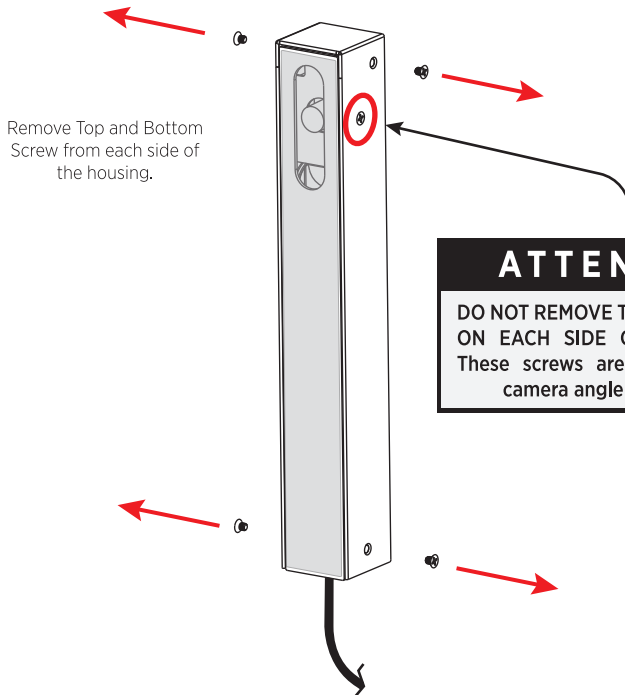
ATTENTION! This is a 12 Volt DC Only Camera!



1. Open Case

Using a Phillips-head screwdriver, remove the four case screws (2 top, 2 bottom) from the sides of the housing.

DO NOT REMOVE THE MIDDLE SCREW ON EACH SIDE OF THE HOUSING! These screws are for adjusting the camera angle in Step #6.



2A. Mount Base (Choose Mounting Option)

For Hidden Cable Mounting:

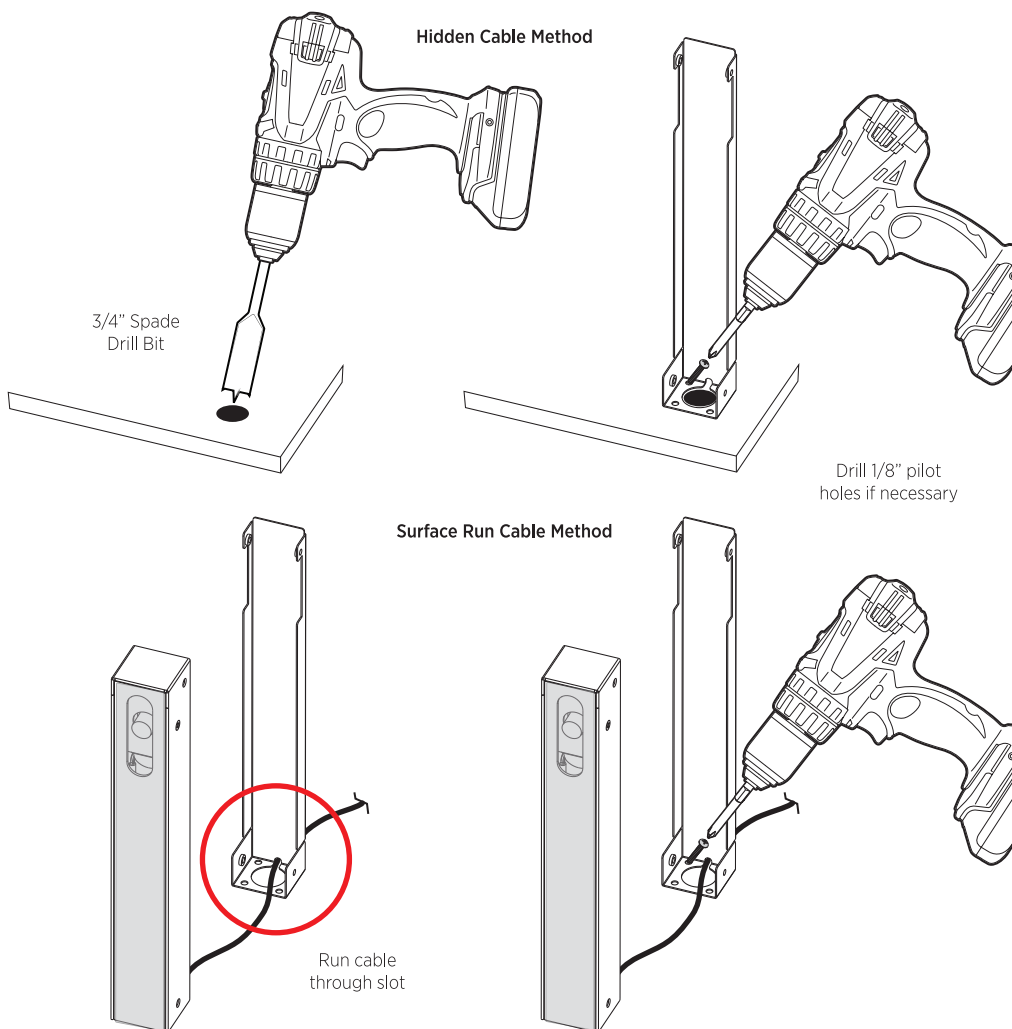
To fully conceal the cable, drill a 3/4" hole in the mounting surface at the center of where the camera will be mounted.

For Surface Run Cable Method:

To install the camera with surface mounted cable, run the camera's cable into the slot on the bottom-rear of the mounting base.

2B. Mount Base

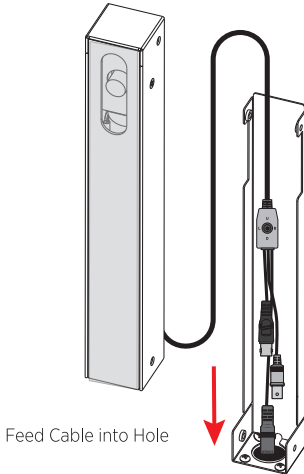
Attach the base to the mounting surface using the four included Phillips-head screws. Depending on the length of your driver bit, it may be necessary to attach the mounting screws at an angle when installing. 1/8" pilot holes are recommended for laminate surfaces. **Note that after mounting the camera base, each side of the housing must be accessible with a screwdriver to re-attach the cover and adjust the camera angle.*



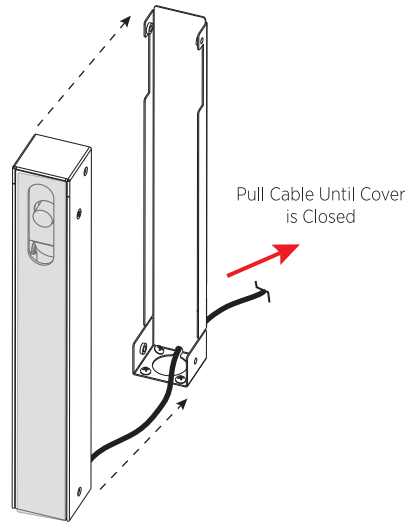
3. Feed Cable Into Mounting Surface

Feed the cable into the hole in the mounting surface and align the front housing onto the base. For surface run cables, gently pull the cable from the backside of the mounting base until the front cover is flush with the base.

Hidden Cable Method

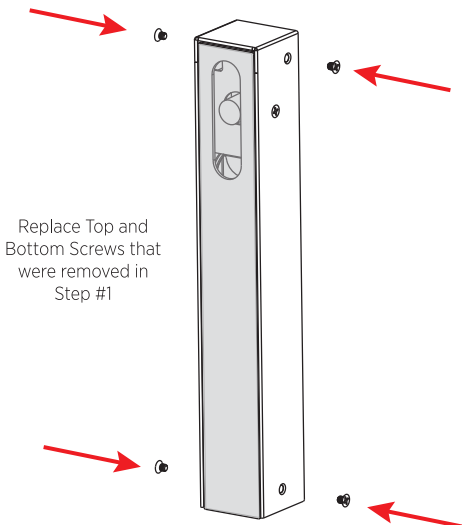


Surface Run Cable Method



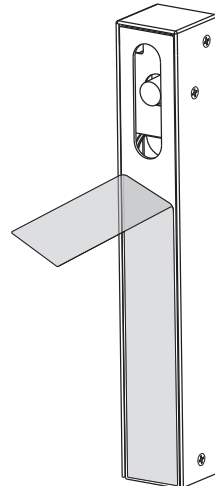
4. REPLACE SIDE SCREWS

Insert and secure the four Phillips-head screws into the sides of the case.



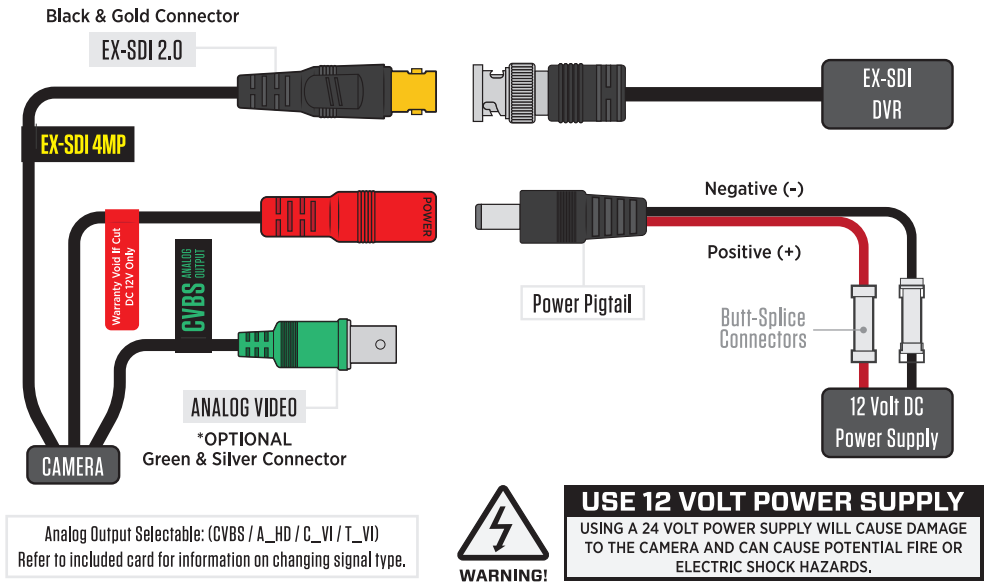
5. Remove Protective Film

After the camera has been attached to the surface, and the main assembly has been attached to the base, remove the film from the front of the housing.



5. Connect Cables

Make connections to the power and BNC cable (BLACK connector is for EX-SDI, GREEN connector is for Analog video). **Use 12 Volt DC only for camera power!** If using 18/2 wire for power wire, use the supplied Power Pigtail and attach to wire with appropriate wire connectors, such as butt-splice connectors (not included).



6. Adjust Camera Angle (Optional)

To adjust the camera angle use two Phillips Head Screwdrivers, one placed on each side of the housing. When viewed from the front of the camera, the screw on the left is the angle adjustment screw, and the right screw is the angle locking screw. Loosen the locking screw first, then move the camera with the angle adjustment screw. When finished, tighten the locking screw.

To verify proper camera angle and/or make OSD adjustments, connect to a test monitor using either Analog or EX-SDI connection from the camera. OSD (On Screen Display) adjustments can be made by using the Joystick on the cable.

