

CE-UJB Install Guide

The Universal Junction box is designed to work with Clinton Electronics' cameras with a double-gang mounting hole pattern, such as Vandal X Domes and BZ Bullet Cameras. If using any other camera, verify it uses a double-gang hole pattern.

Included Items:

- Junction Box Assembly x 1
- 1" Phillips-head Shoulder Screws x 4
- Drywall Anchors x 4
- O-Rings x 4
- M4x8 Phillips-head Screws x 4
- Rubber Seal x 1
- Metal Cover Plate x 1
- M3x6 Phillips-head Screws x 3
- 2.5mm Allen Wrench x 1

Required Items:

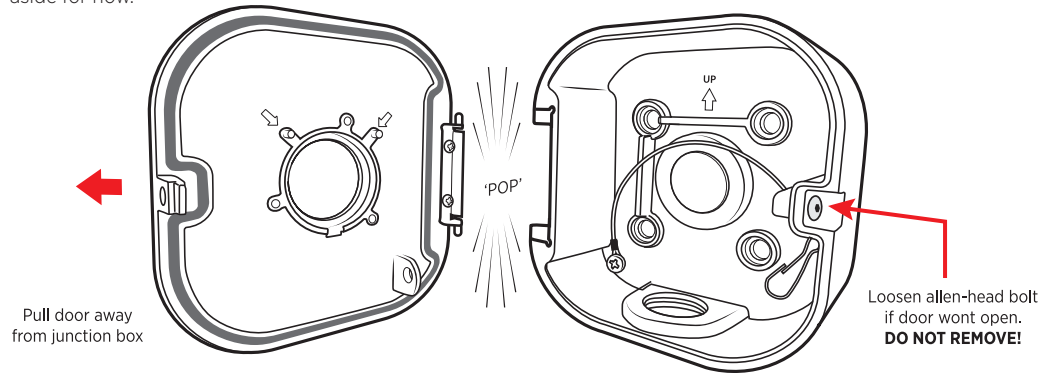
- Phillips-head Screwdriver
- Power Drill
- Phillips-head Driver Bit

Optional Items:

- 3/32" Drill Bit
- 3/4" Spade Drill Bit
- 3/4" EMT Conduit Adapter
- 3/4" EMT Conduit

1. Remove Door

Begin by opening the door and firmly prying the door away from the junction box. The door will pop out of the junction box hinge. If the door does not open, loosen the Allen-head bolt on the side of the junction box. Set the door aside for now.

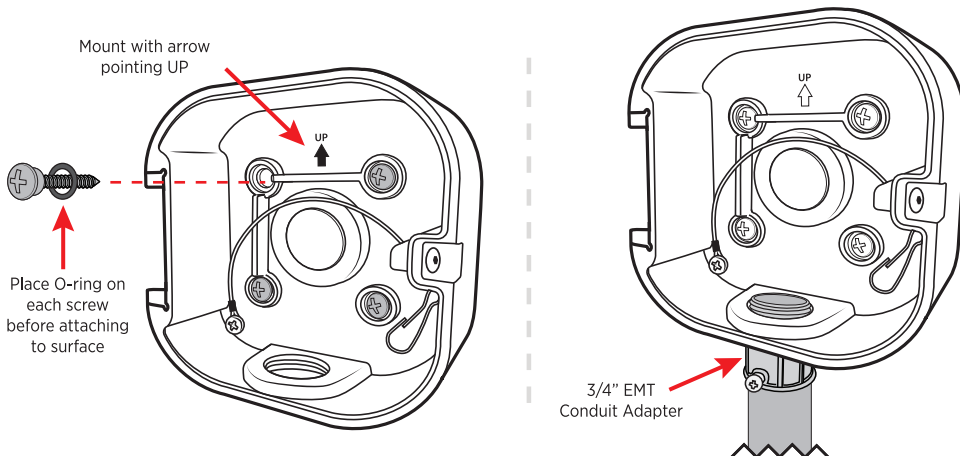


⚠ ATTENTION The Allen-head door bolt is reverse-thread. **DO NOT REMOVE** bolt from the junction box housing.

2A. Mount to Surface (Using Bottom 3/4" EMT Conduit Connection)

Place the (4) O-rings onto the supplied (4) Phillips-head Shoulder Screws and attach to desired mounting surface. A 3/32" pilot hole is recommended if mounting to wood. If mounting to drywall use the supplied (4) drywall anchors.

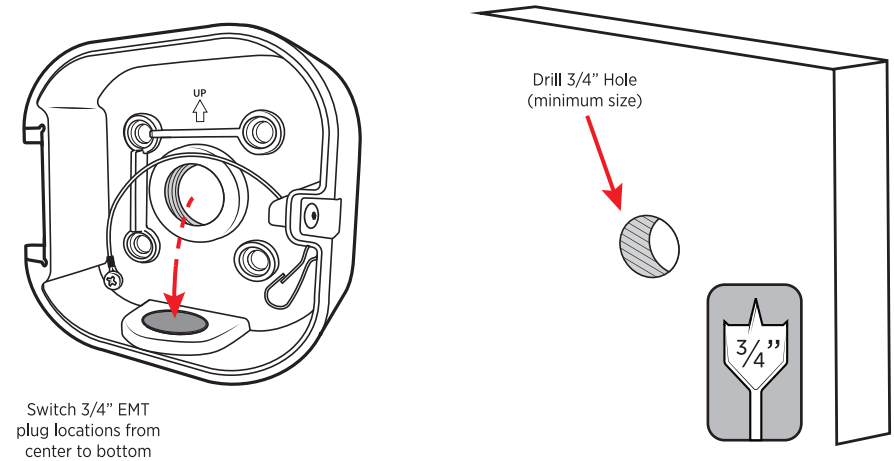
Thread 3/4" EMT Conduit Adapter (not included) into the bottom hole on the junction box.



2B. Mount to Surface (Through Surface Using Center Hole)

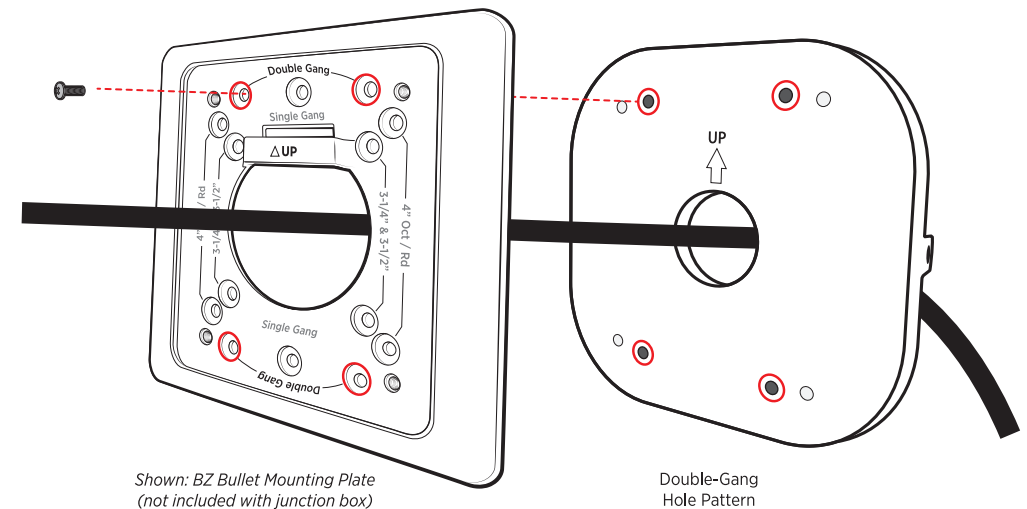
If the cable for the camera is to be run into/through the mounting surface, relocate the 3/4" EMT plug to the bottom of the junction box. Drill a 3/4" minimum hole into the mounting surface for the cables to pass through.

Mount to surface as indicated on previous step.



3. Attach Camera to Door

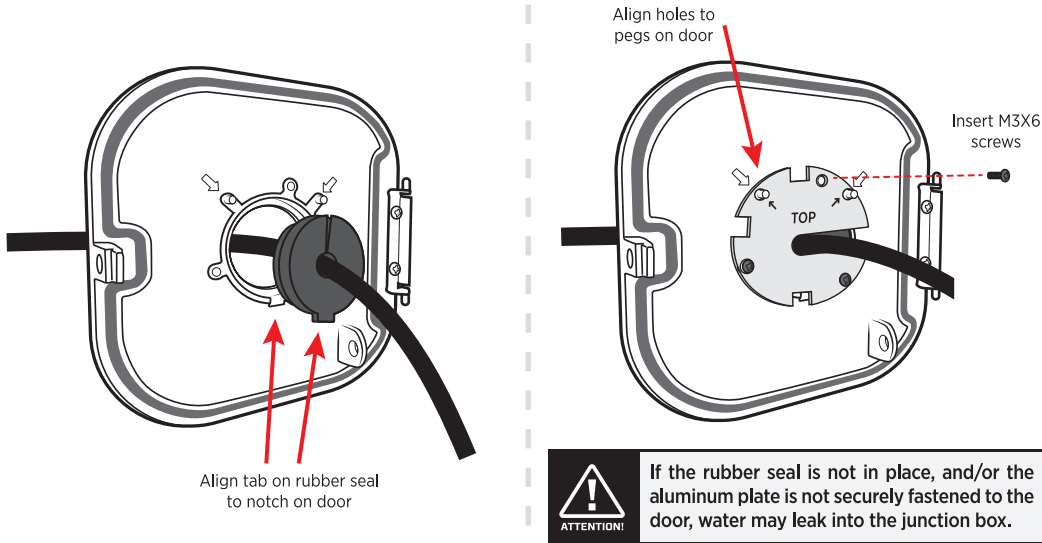
Attach camera with double-gang hole pattern to the door using the included (4) M4x8 Phillip-head screws. If using a BZ Series Bullet Camera or Vandal X Dome Camera, the mounting plate/bottom case from the camera should be installed prior to running the cables through the door.



4. Run Cables Through Door

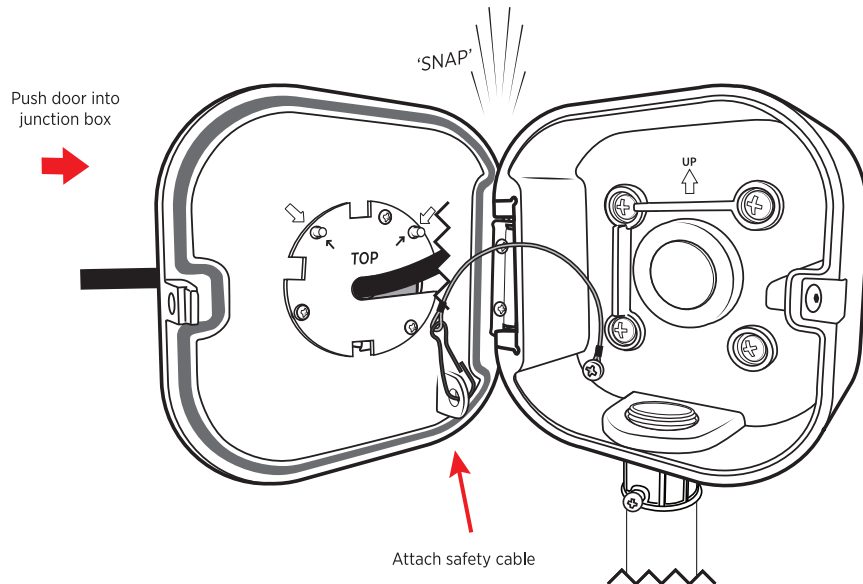
Pass cables from camera through the front-side of the door. From the back-side of the door apply the rubber seal around the cables (split the seal and place around cable and fit bottom notch into recessed area on door).

With the seal in place, attach the aluminum cover over the seal by aligning the two holes marked 'TOP' onto the pegs from the door. Attach using the (3) included M3x6 Phillips-head screws.



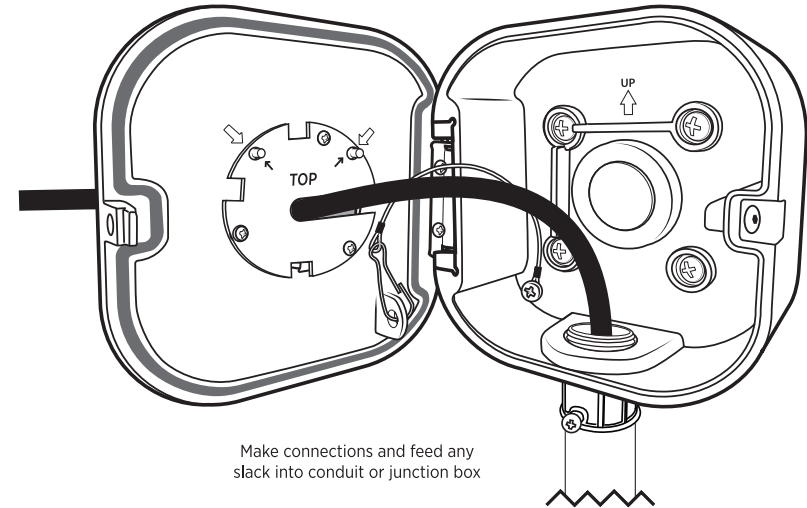
5. Attach Door to Junction Box

Clip the safety cable from the junction box to the door, then re-attach the door to the junction box. Align the pegs from the door to the hinge on the junction box and firmly press into place.



6. Connect Cables

Make connections from the camera to the power and video cable from head-end source. Feed any cable slack into the conduit or neatly into the space provided in the junction box.



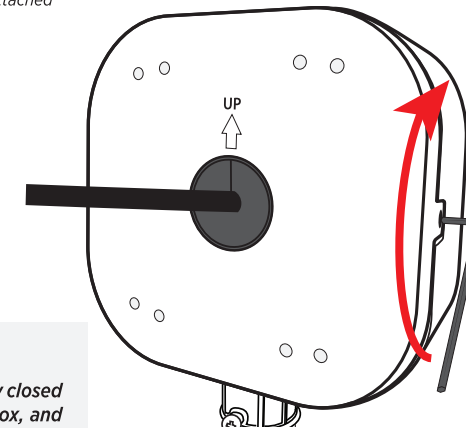
7. Close and Secure Door

Firmly close the door and secure by tightening the recessed Allen-head bolt with the included 2.5mm Allen-head Wrench. Ensure the safety cable and/or cables from camera are not pinched when closing the door. Tighten until the bolt is seated firmly against the door.

**Shown without camera attached*

NOTICE

If the door is not firmly closed against the junction box, and if the Allen-head bolt is not fully tightened, the weather resistant seal will be compromised, allowing water to leak into the junction box.



Tighten recessed Allen-head bolt until snug against inner door.

DO NOT REMOVE THE BOLT!

The bolt will be recessed and concealed behind the door when closed.

ATTENTION

The Allen-head door bolt is reverse-thread. When tightened the bolt will screw outwards, towards the inner door— securing the door closed. DO NOT REMOVE bolt from the junction box housing!