

# CE-CPFA54 Install Guide

## Included Items:

- VESA Bracket x 1
- Adapter Straps x 2
- 1/4"-20 x 1.75" Hex Head Bolt x 1
- 1/4" Flat Washer x 2
- 1/4"-20 Locknut x 1
- M4 Phillips Flat Head Screws x 4
- M4 Locknuts x 4
- M3 Phillips Flat Head Screws x 4

## Required Items:

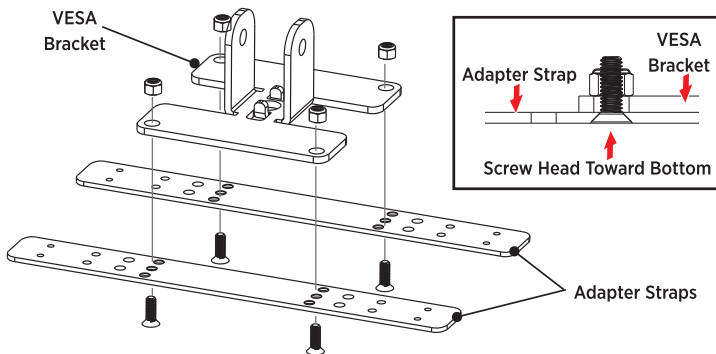
- 9/32" Wrench
- 7/16" & 10mm Wrenches
- Phillips head screwdriver
- Axis FA54, or Hanwha PNM-9000QB, or device with VESA 100 pattern
- Device Mounting Screws
- Clinton Electronics Camera Pole

## 1. Attach Adapter Straps

Use one of the hole patterns shown in the right-hand column to align the holes on the VESA Bracket to the holes on the Adapter Straps which correspond to your device.

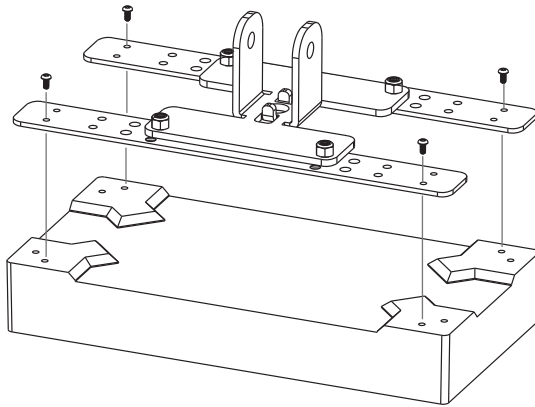
To ensure screw heads are flush and do not interfere with mounting your device, the chamfered holes must face downward (away from the face of the VESA Bracket).

Use a 9/32" wrench and Phillips screwdriver to attach the Adapter Straps to the VESA Bracket.



## 2. Mount Bracket to Device

Attach the screws supplied with your device through the corresponding outer holes located in Step 1. If mounting a Hanwha PNM-9000QB, attach with the included M3x8mm long Phillips head screws, and discard the Hanwha mounting plate.

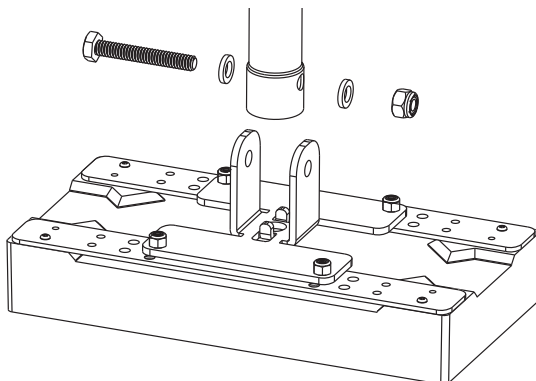


## 3. Insert Top Bolt

Attach the 1/4"-20 Bolt and one of the flat washers, through the hole in the VESA Bracket and through the hole near the bottom end of the Camera Pole.

Attach the remaining flat washer to the other side of the bolt, and tighten the locknut to the bolt using 7/16" & 10mm Wrenches.

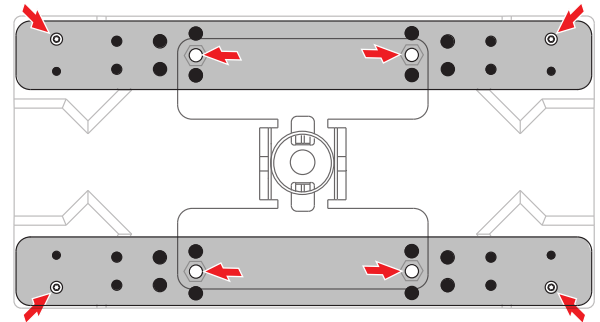
NOTE: It may be necessary to run wires through the pole prior to attaching the 1/4"-20 Bolt.



## Hole Patterns

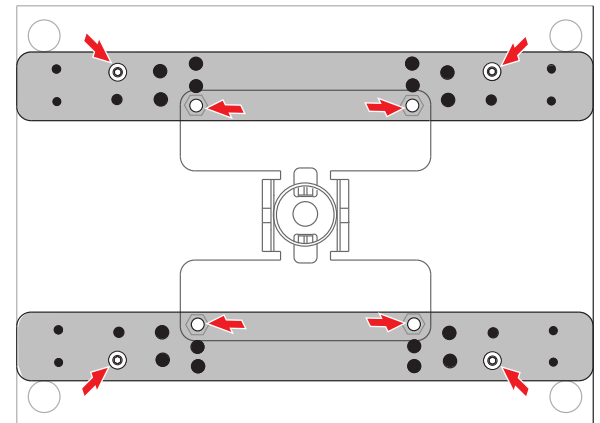
### Axis FA54 Attachment Pattern

viewed from top



### Hanwha PNM-9000QB Attachment Pattern

viewed from top



### VESA 100 Attachment Pattern

viewed from top

