

CE-CPFM(B) Install Guide

Included Items:

- Universal Pendant Mount Assembly
- 1/4"-20 x 1-1/2" Bolt x1
- 1/4"-20 Lock Nut x1
- 1/4" Flat Washer x2
- Instructions

Required Items:

- Two 7/16" Wrenches
- Fasteners for mounting camera or other device to CE-CPFM



Maximum Load Capacity: 10 lbs / 4.5 kgs



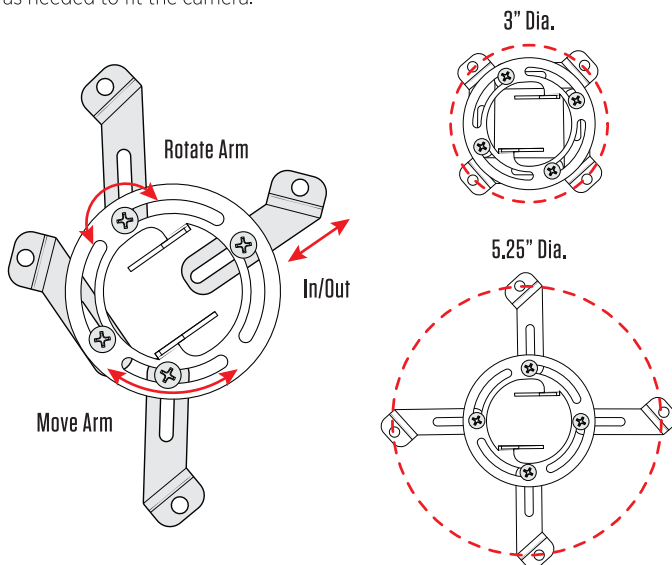
CAUTION!

USE ONLY AS DESIGNED

This product is designed to serve as a mounting apparatus between a camera pole mount and a camera or other small low voltage device. Refer to the camera pole installation guide for details on installing the camera pole. It is intended for use only with the maximum weight indicated. Use with products heavier than the maximum weights indicated may result in instability causing possible injury.

1. ALIGN HOLES

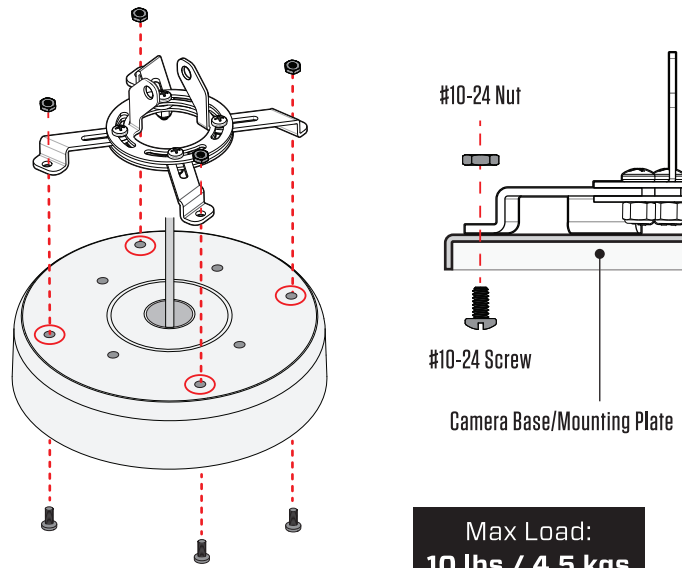
Align the mounting holes on your camera to at least 2 holes on the CE-CPFM. The arms on the CE-CPFM Pendant Mount can be repositioned to fit most devices ranging from 3" - 5.25" in diameter. Adjust the arms in/out or rotate as needed to fit the camera.



i **OPTIONAL:** If desired, remove unused mounting arms depending on the number of mounting holes on the camera.

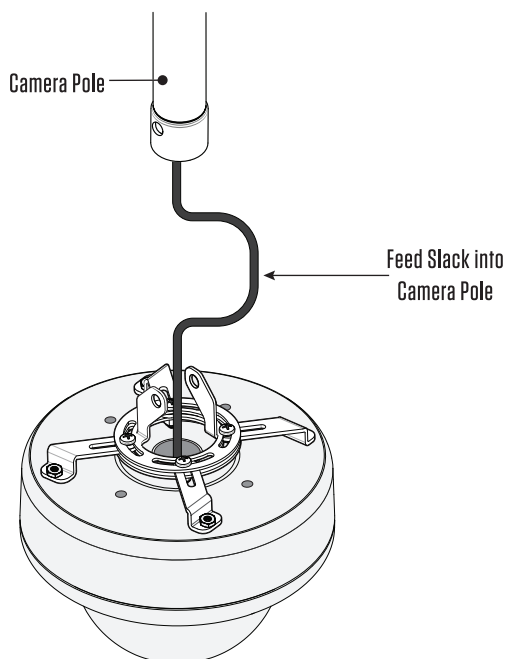
2. ATTACH TO CAMERA

Attach camera to the CE-CPFM with machine screws and nuts (*Fasteners Not Included*). The mount will allow for use of common sized #10-24, #10-32, #8-32, M4, or smaller diameter machine screw sizes.



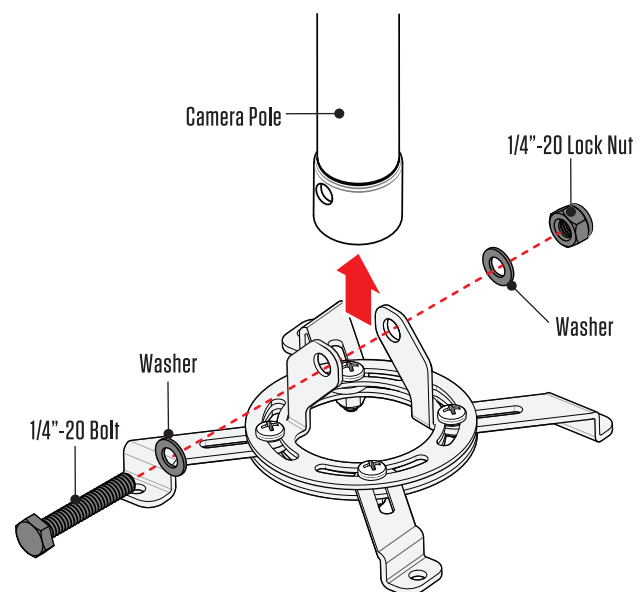
3. CONNECT CABLES

Attach power and video cables and feed any slack into the camera pole.



4. MOUNT TO CAMERA POLE

Guide the CE-CPFM onto the lower end of the camera pole. Then secure the bracket to the pole using the included 1/4"-20 bolt, washers, and lock nut.



**Shown without camera attached.*