

ID Series Install Guide

For 2MP & 5MP Network Indoor Dome Cameras

Included Items:

- ID Indoor Dome Camera x 1
- Torx Wrench (T10) x 1
- Instructions x 1
- Mounting Screws x 4 (M4x25mm)
- Drywall Anchors x 4
- Mounting Template x 1

Required Items:

- Phillips Head Screwdriver
- Drill with 1/4" or 5/8" Drill Bit

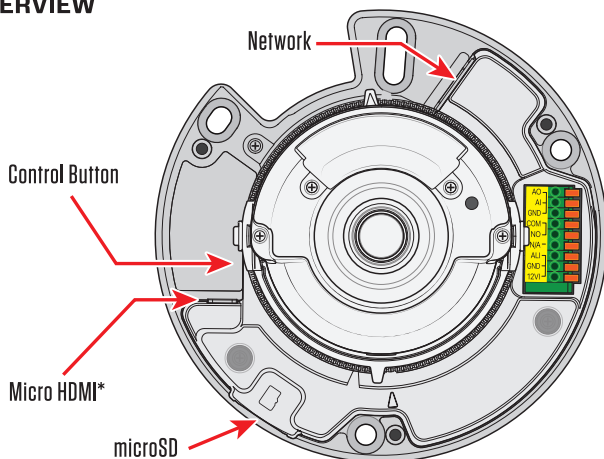
- PoE or DC12V Power Supply

Optional Items:

- microSD Card (not included)

Installation should be performed by qualified service personnel only and should conform to all applicable local codes.

OVERVIEW



INPUTS / OUTPUTS

AO	Audio Out
AI	Audio In
GND	Ground
COM	Comm (Alarm Out)
NO	Normal Open
N/A	n/a
ALI	Alarm In
GND	Ground (DC-)
12VI	DC12V Input (DC+)

*Connections vary by model.

⚠ LOGIN INFO

This camera does not have a default password. You must create a password to set up and view the camera. The username is ADMIN.

⚠ IP ADDRESS

This camera is set to use DHCP. If no DHCP network is available, you can connect to the camera with the default IP Address: 192.168.1.90

i CAMERA DISCOVERY

Scan the QR Code to the right to download Clinton IP Finder.



Available for
Windows or MacOS.



Clinton IP Finder

i REBOOT / RESET

REBOOT: Press and hold the CONTROL BUTTON for 5 seconds, then release.

FACTORY DEFAULT: Press and hold the CONTROL BUTTON for 15 seconds, then release.

? SUPPORT

Need Help? Scan the QR Code or go to www.support.clintonelectronics.com to search our Knowledge Base, find firmware updates, or download software.

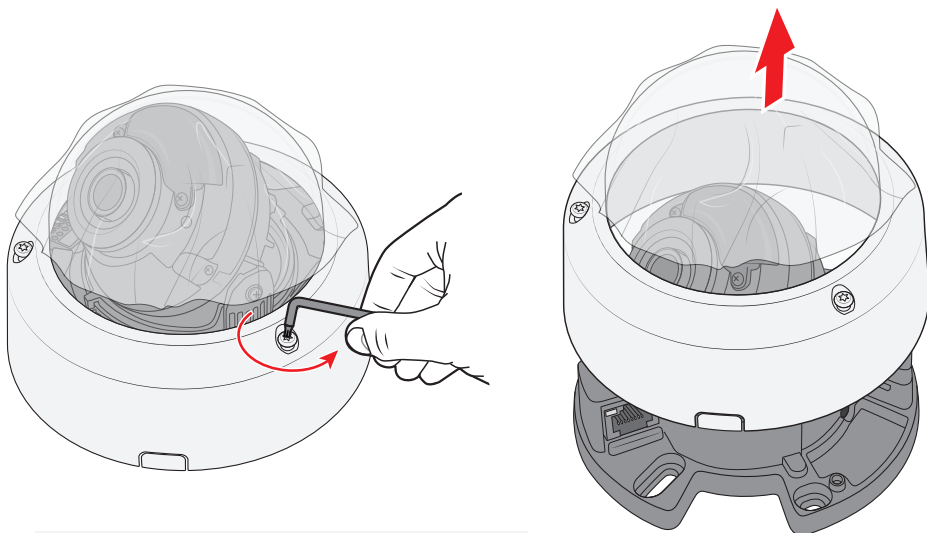


Clinton Support

BATTERY WARNING: Do not expose the battery to extremely high temperatures and/or extremely low air pressure, this can result in an explosion or the leakage of flammable liquid or gas from the battery.

1. REMOVE DOME COVER

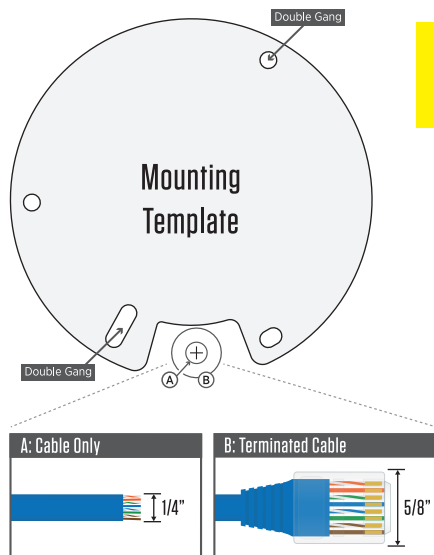
Loosen the three Torx screws using the included T10 Torx wrench, then lift the dome cover off the main camera assembly. Leave the protective film on the dome bubble until the final step.



NOTICE The 3 Torx screws are not designed to be fully removed from the dome top.

2. PREPARE MOUNTING SURFACE

Use the included mounting template, or hold the camera against the mounting surface and mark the desired holes with a pencil. The notched cut-out on the template indicates where the network cable will route through the mounting surface. Mark and drill an appropriately sized hole— drill a 1/4" hole non-terminated network cable or a 5/8" hole for terminated cable.

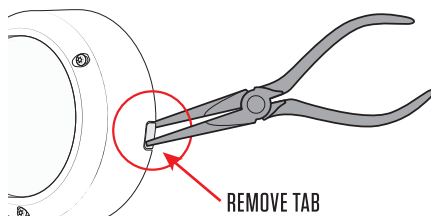


ATTENTION: INDOOR USE ONLY

This camera is intended only for INDOOR INSTALLATIONS. Do not install outdoors or where water may enter the camera.

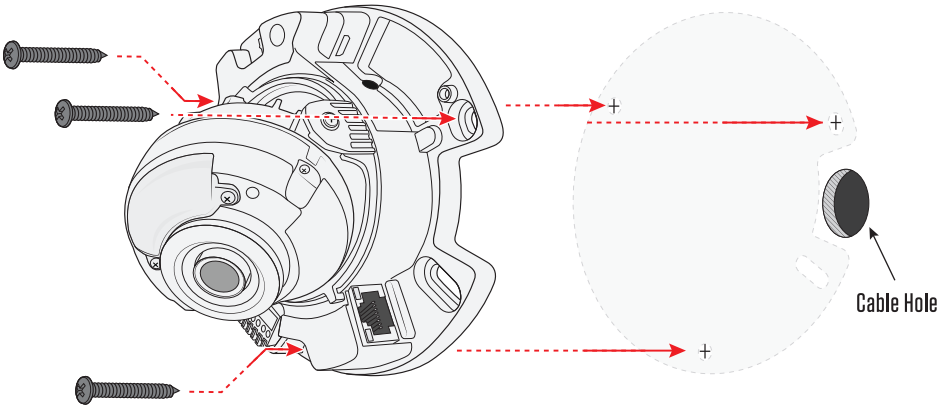
CABLE SIDE EXIT

If the cable will run on the surface, instead of through a hole, you will need to remove the side cable exit tab using a pair of pliers.



3. ATTACH CAMERA TO SURFACE

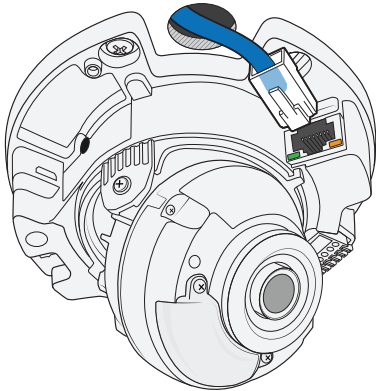
Attach the camera to the mounting surface using the included screws and drywall anchors if necessary.



4. CONNECT NETWORK CABLE

Connect a network cable to the camera. Ensure the network cable length is less than 300ft, longer cable runs will cause data and power issues. The camera will automatically power ON when connected to a PoE switch or injector. Ensure the PoE source has enough available power budget for powering the camera.

Connect Ethernet Cable

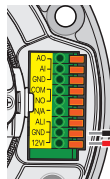


PoE Info

PoE Power Consumption: 5.9W
Use IEEE 802.3af Compliant Power Supply

DC12V Info

DC12V Power Consumption: 0.5A



GND (DC-)

12V+ (DC+)

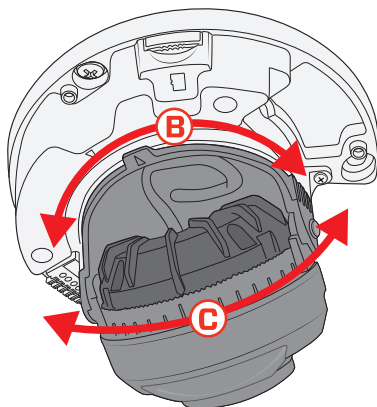
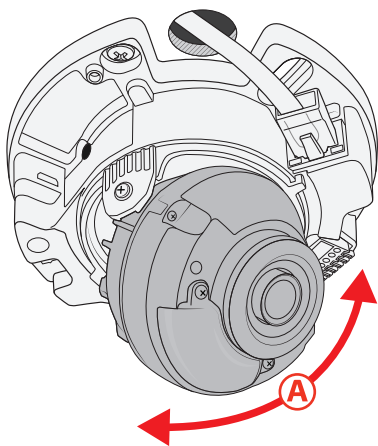
If connecting to a non-PoE network, a DC12V power source is required. Maintain the correct polarity to avoid damage to the camera. Use only DC12V supply, 24V will damage the camera. Do not use PoE and DC12V power simultaneously.

This product is intended to be supplied by a UL Listed Power Supply Unit marked "Class 2" or "LPS" or "PS2"

5. ADJUST CAMERA

Adjust the angle of the camera as necessary. Avoid touching the lens when adjusting the camera.

- **A. Camera Tilt:** Angle the camera up or down.
- **B. Camera Pan:** Turn the camera assembly left or right. There is a “stop” that prevents the camera from rotating more than 180° in either direction.
- **C. Lens Rotation:** Rotate the lens as needed to adjust the level. Rotate 90° for hallway applications (also requires Corridor Mode to be enabled in camera settings to rotate network video).



6. ATTACH DOME COVER

Align the side cable exit notch on the outer dome to the cable cut-out on the camera base, then guide the dome top onto the base. Tighten the three torx screws to secure the dome top, then remove the clear protective film from the dome bubble.

