

CE-TR30ADRW5C Install Guide

Included Items:

- Turret Camera x 1
- 2mm Allen Wrench x 1
- RJ45 Weather Resistant Cover x 1
- Phillips Head Screws x 4
- Drywall Anchors x 4
- Instructions x 1
- Mounting Template x 1
- Rubber Cable Plug x 1

Required Items:

- Phillips Head Screwdriver
- Drill with 13/16" Drill Bit/Hole Saw

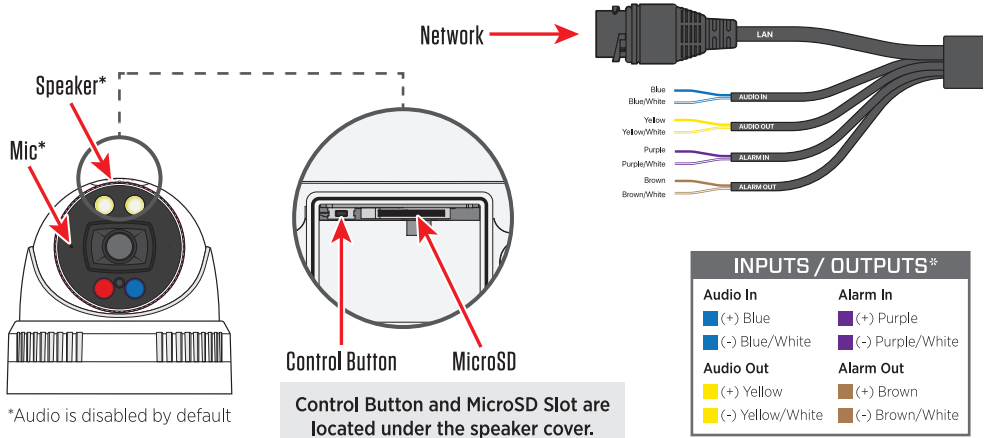
- PoE Power Supply

Optional Items:

- microSD Card (not included)

Installation should be performed by qualified service personnel only and should conform to all applicable local codes.

OVERVIEW



⚠ LOGIN INFO

This camera does not have a default password. You must create a password to set up and view the camera. The username is **ADMIN**.

⚠ IP ADDRESS

This camera is set to use DHCP. If no DHCP network is available, you can connect to the camera with the default IP Address: **192.168.1.90**

i CAMERA DISCOVERY

Scan the QR Code to the right to download **Clinton IP Finder**.



Available for Windows or MacOS.



Clinton IP Finder

i REBOOT / RESET

REBOOT: Press and hold the **CONTROL BUTTON** for 5 seconds, then release.

FACTORY DEFAULT: Press and hold the **CONTROL BUTTON** for 15 seconds, then release.

? SUPPORT

Need Help? Scan the QR Code or go to www.support.clintonelectronics.com to search our Knowledge Base, find firmware updates, or download software.

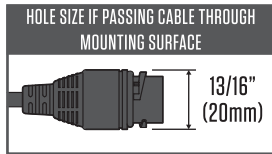
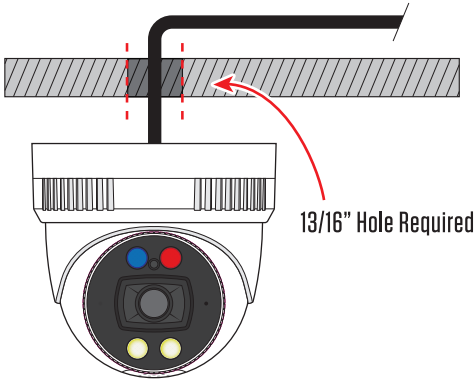


Clinton Support

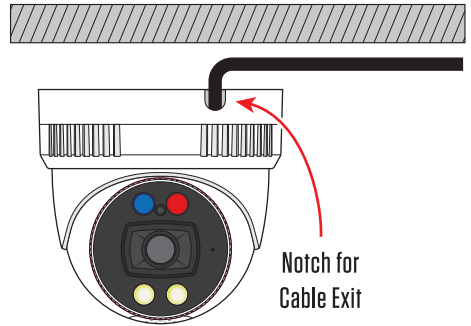
1. PREPARE MOUNTING SURFACE

Depending on the installation type; cable routed through the surface or cable routed on surface exterior- a hole may be required. If the cable will be routed through the surface, a minimum 13/16" hole is required to fit the cable connections through the mounting surface.

Cable Routed Through Surface

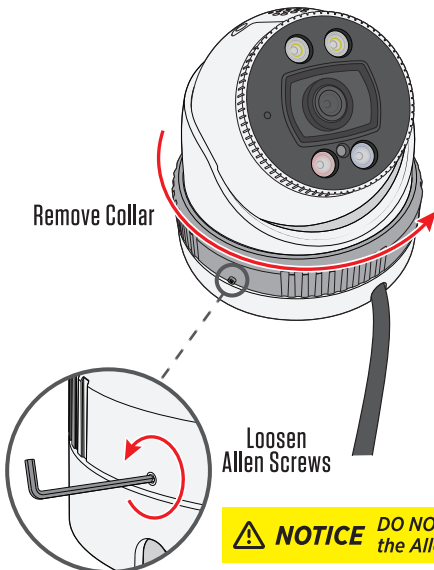


Cable Routed On Surface

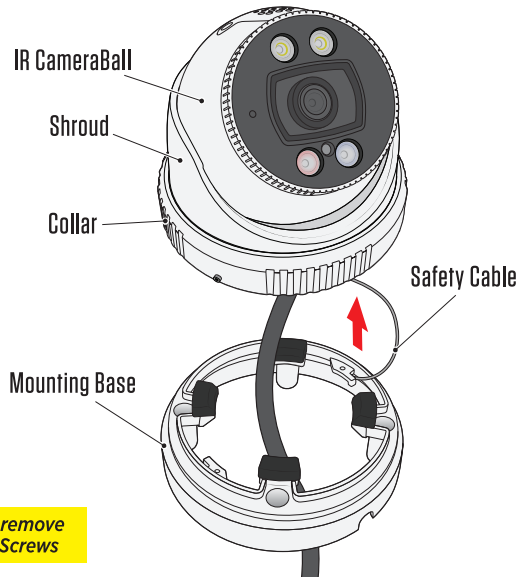


2. SEPARATE CAMERA FROM MOUNTING BASE

Loosen the two Allen set screws on the base of the camera with the included 2mm Allen wrench, (do not remove the set screws) then rotate the collar counter-clockwise to separate the IR camera ball, shroud, and collar from the mounting plate. The camera ball will be connected to the mounting base with a safety cable.

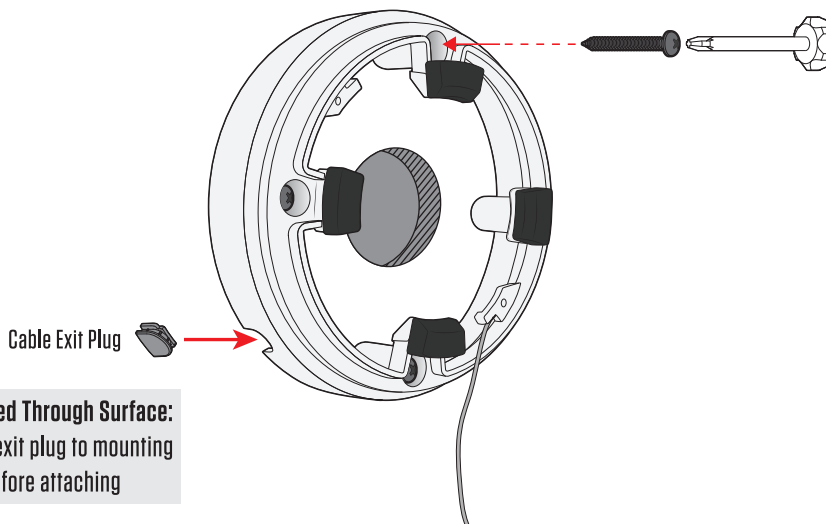


NOTICE DO NOT fully remove the Allen Set Screws



3. INSTALL MOUNTING BASE

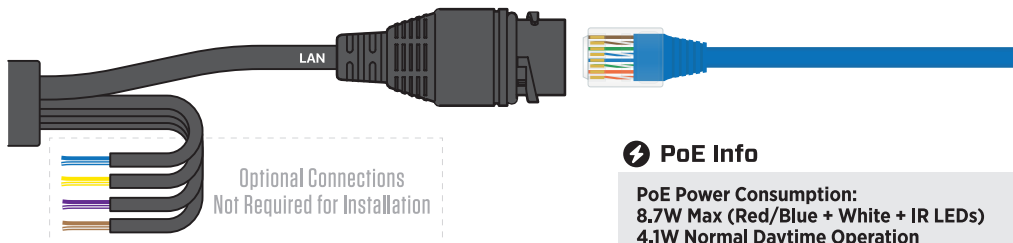
If desired, use the included mounting template to mark and pre-drill holes. Hold the mounting base onto the surface and attach using the (4) supplied Phillips-head screws. *NOTE: It is recommended to use the drywall anchors if mounting to drywall.



4. CONNECT NETWORK CABLE

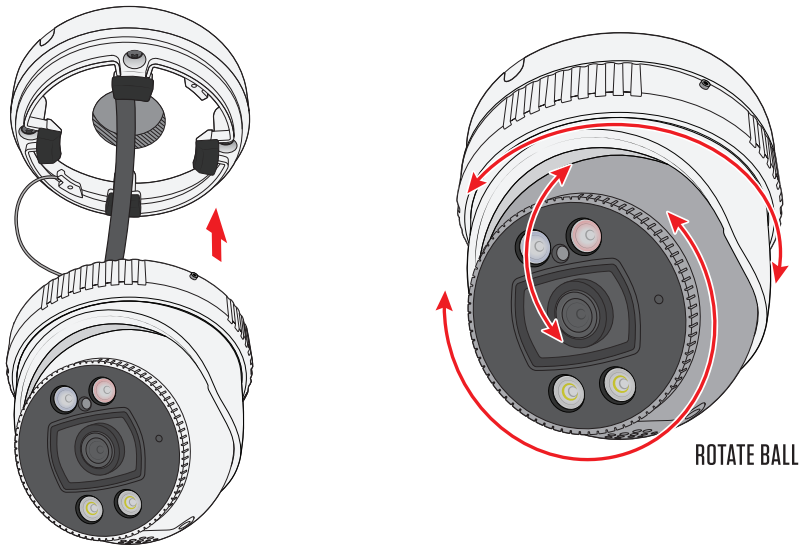
Connect a network cable to the camera. Ensure the network cable length is less than 300ft, longer cable runs will cause data and power issues. The camera will automatically power ON when connected to a PoE switch or injector. Ensure the PoE source has enough available power budget for powering the camera.

If the network cable will be exposed to weather/moisture, it is strongly suggested to use the included weather resistant cover. *Refer to separate "Cable Weatherproofing Guide."



5. ATTACH CAMERA TO MOUNTING BASE & ADJUST

Guide the IR camera ball, shroud, and collar onto the mounting base, then screw the collar onto the mounting base. Loosely tighten the two set screw with the included 2mm Allen wrench. While the collar and set screws are loose, make camera angle adjustments by rotating the camera ball as necessary.



6. FINAL ADJUSTMENT & TIGHTEN COLLAR

After adjusting the camera angle, firmly tighten the collar and set screws to lock the camera angle in position. Ensure the white LEDs & speaker are oriented to the “bottom” of the camera. If oriented differently the image may be upside-down or rotated.

