

# CE-UJBXL Install Guide

## Included Items:

- Junction Box Assembly x 1
- 1" Phillips-head Shoulder Screws x 4
- Drywall Anchors x 4
- O-Rings x 4
- M4x12 Phillips-head Screws x 4
- Rubber Seal x 1
- Metal Cover Plate x 1
- M3x6 Phillips-head Screws x 3
- 3/16" Allen Wrench x 1

## Required Items:

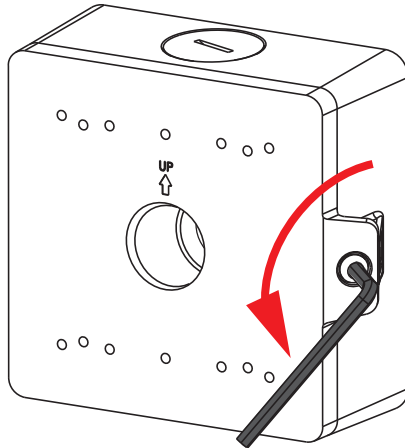
- Phillips-head Screwdriver
- Power Drill
- Phillips-head Driver Bit

## Optional Items:

- 3/32" Drill Bit
- 3/4" Spade Drill Bit
- 3/4" EMT Conduit Adapter
- 3/4" EMT Conduit
- 5/16" Nut Driver or Flat Head Screwdriver

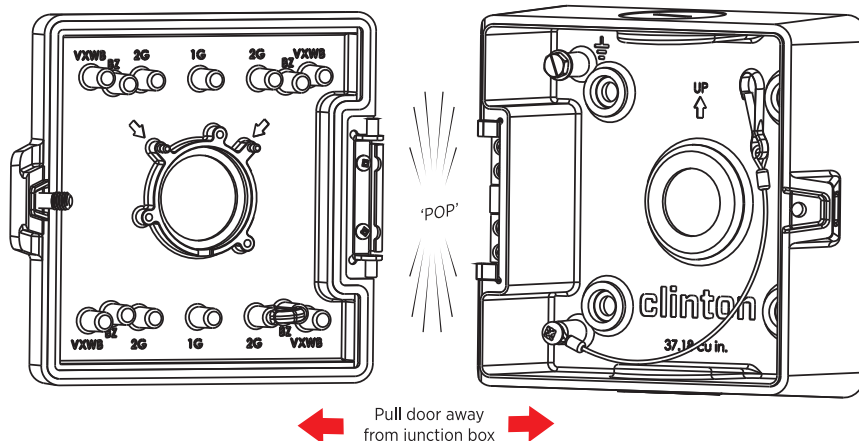
## 1. Open Door

Open the door by loosening the Allen-head bolt on the side of the junction box using the included 3/16" Allen wrench. This fastener is a captive bolt and will remain in the cover after being loosened.



## 2. Remove Door

With the door open, firmly pull the door away from the junction box. The door will pop out of the junction box hinge. Set the door aside for now.

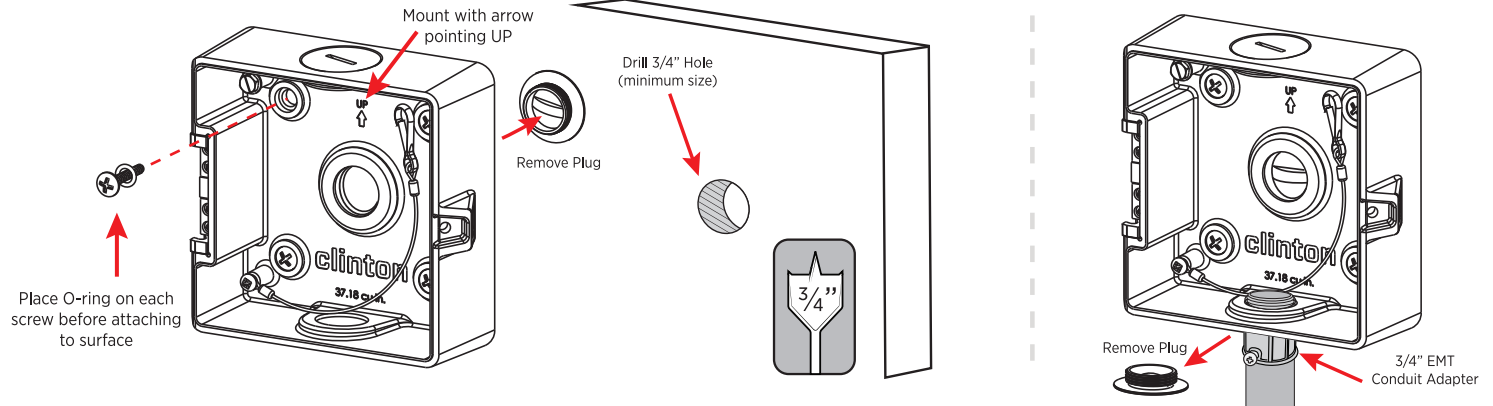


## 3. Mount Box

(Through Surface Using Center Hole) If the cable for the camera is to be run into/through the mounting surface, remove the 3/4" EMT plug from the backside of the junction box. Drill a 3/4" (minimum) hole into the mounting surface for the cables to pass through. Place the (4) O-rings onto the supplied (4) Phillips-head Shoulder Screws and attach to mounting surface. A 3/32" pilot hole is recommended if mounting to wood. If mounting to drywall use the supplied (4) drywall anchors.

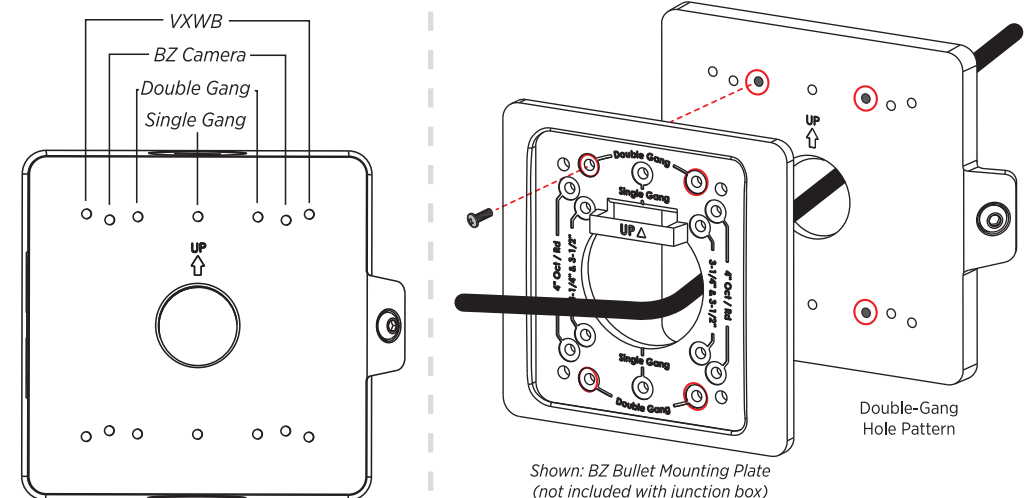
(Using Bottom 3/4" EMT Conduit Connection)

Thread 3/4" EMT Conduit Adapter (not included) into one of the three holes on the junction box. Mount to surface as indicated on previous step.



## 4. Attach Camera to Door

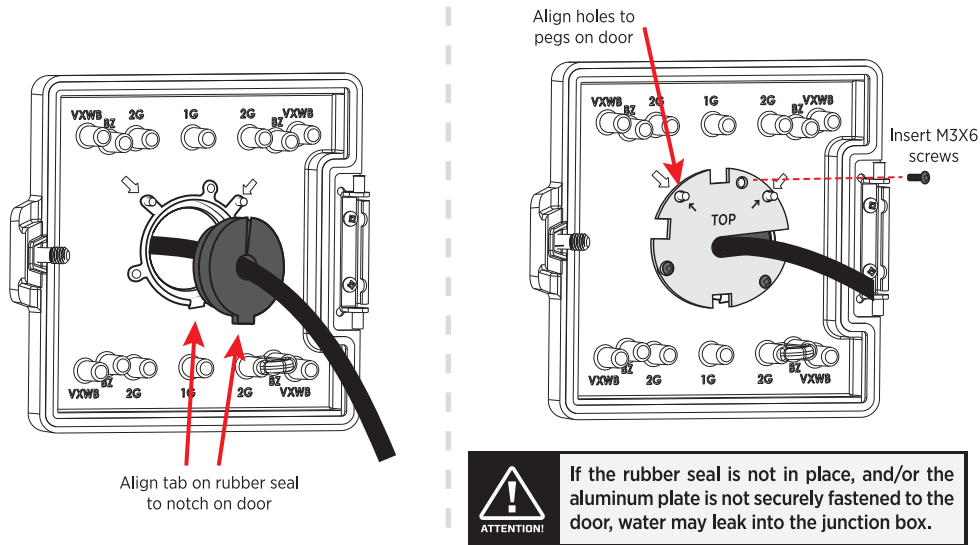
Attach camera to one of the four mounting hole patterns on the door using the included (4) M4x12 Phillips-head screws. If installing a BZ Series Bullet Camera, Vandal X Dome Camera or VXWB Wall Bracket, mount the bracket or plate/bottom case from the camera prior to running the cables through the door.



## 5. Run Cables Through Door

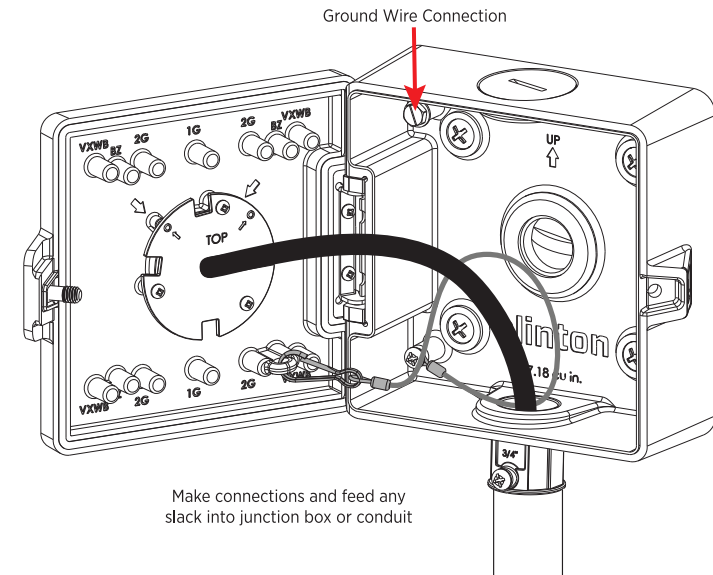
Pass cables from camera through the front-side of the door. From the back-side of the door apply the rubber seal around the cables (split the seal and place around cable and fit bottom notch into recessed area on door).

With the seal in place, attach the aluminum cover over the seal by aligning the two holes marked 'TOP' onto the pegs from the door. Attach using the (3) included M3x6 Phillips-head screws, and tighten until the seal tightens around the cable.



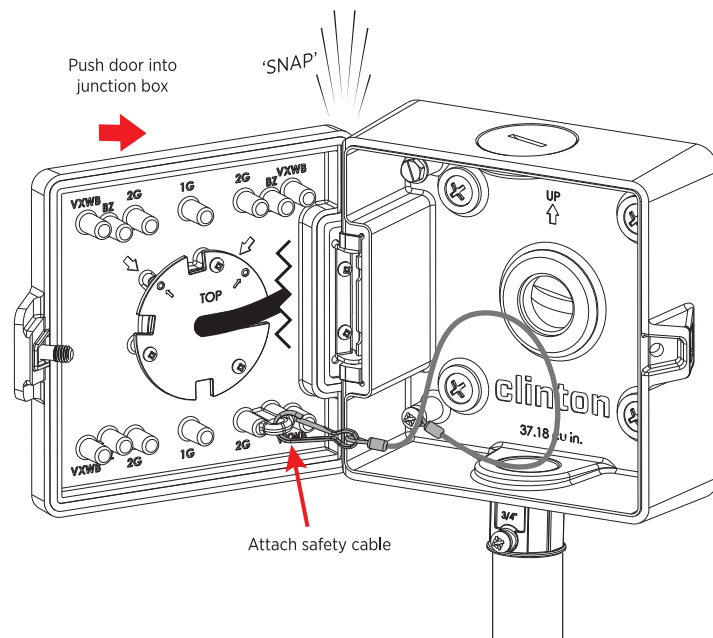
## 7. Connect Cables

Make connections from the camera to the cables from head-end source. Feed any cable slack into the conduit or neatly into the space provided in the junction box. If grounding is necessary, loosen the grounding screw using a 5/16" nut driver or flat head screwdriver, and attach ground wire.



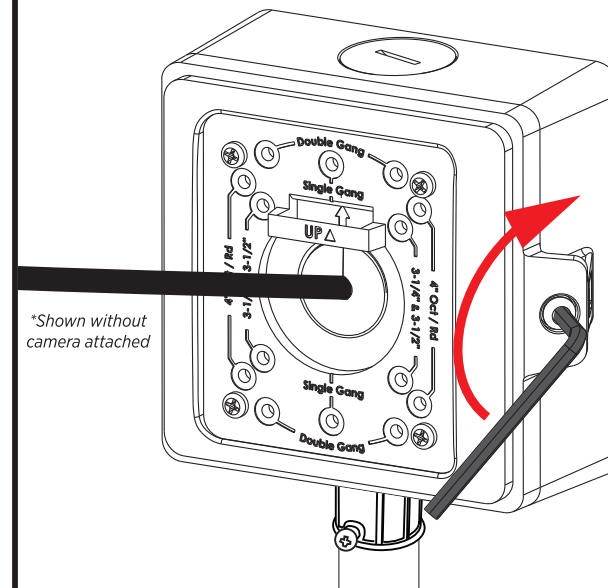
## 6. Attach Door to Junction Box

Clip the safety cable from the junction box to the door, then re-attach the door to the junction box. Align the pegs from the door to the hinge on the junction box and press firmly to snap into place.



## 8. Close and Secure Door

Firmly close the door and secure by tightening the Allen-head bolt with the 3/16" Allen-head Wrench. Ensure the safety cable and/or cables from camera are not pinched when closing the door.



### ⚠ NOTICE

If the door is not firmly closed against the junction box, and if the Allen-head bolt is not fully tightened, the weather resistant seal will be compromised, allowing water to leak into the junction box.